



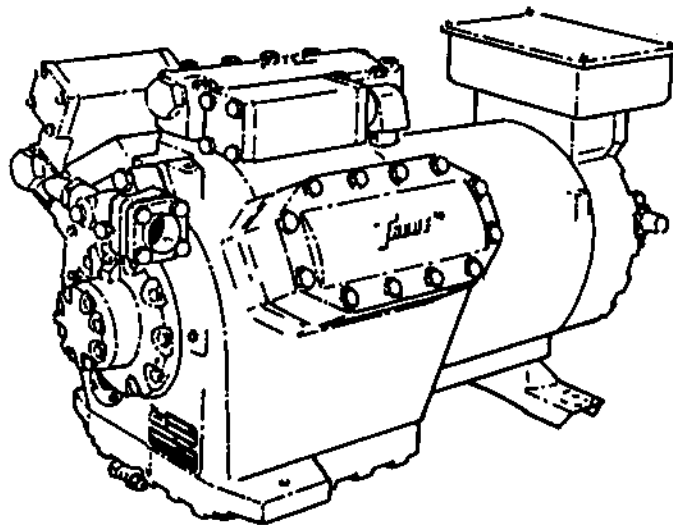
TRANE™

Unit Parts

HCOM-UP-14A

Library	Service Literature
Product Section	Refrigeration
Product	Compressor-Condensing Units, M
Model	HCOM
Literature Type	Unit Parts
Sequence	14A
Date	September, 1986
File No.	SV-RF-COM-HCOM-UP-14A-986
Supersedes	HCOM-UP-14 5/81

Semi-Hermetic Reciprocating Compressor



**Literature Change: General Update.
Added CNT-553..Oil Safety Control
Moved Bearing Inserts in Illustration**

**Model "M"
3 - 4 - 6 Cylinders**

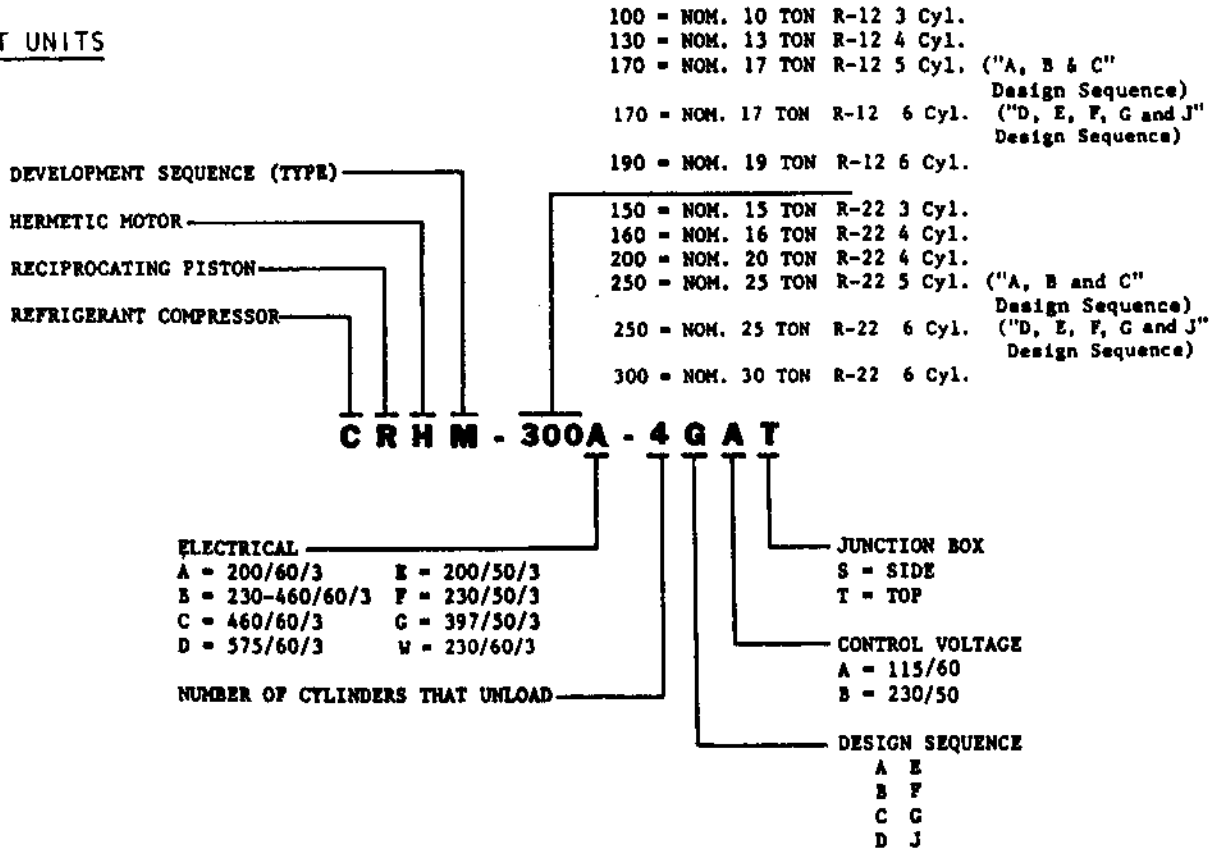
**A,B,C,D,E,F,G and J
Design Sequences**

Since The Trane Company has a policy of continuous product improvement and parts standardization, it reserves the right to change specifications and design without notice. This parts list identifies known standardized parts and other parts changed by standardization. The installation and servicing of this equipment should be done by qualified, experienced technicians.

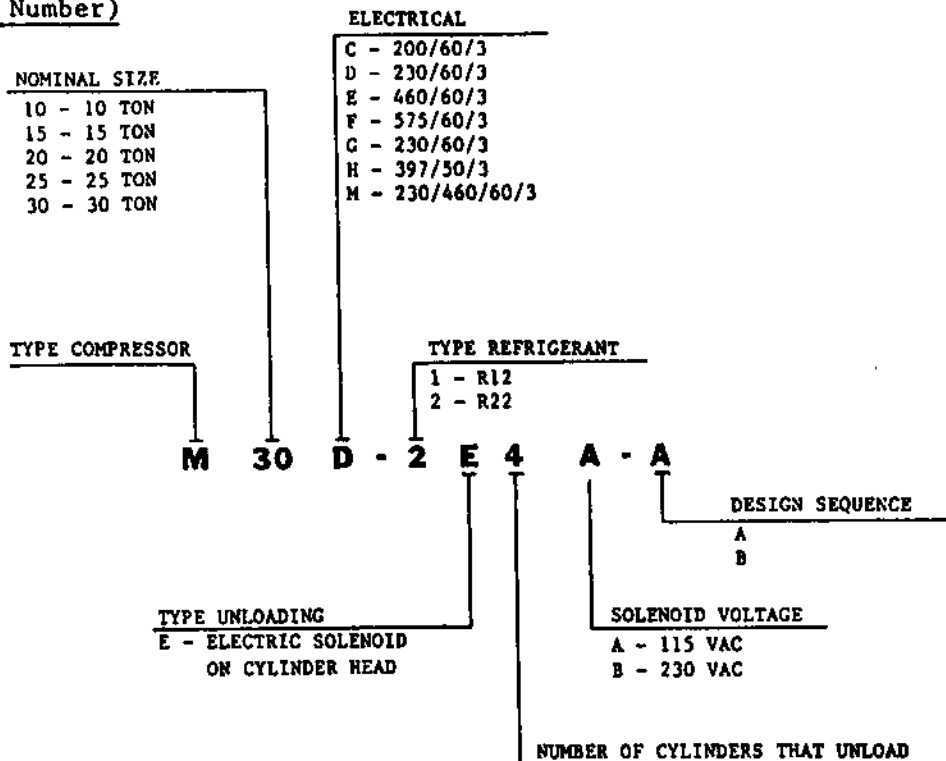
Model Number Description

Trane products are identified by a multiple character model number that precisely identifies a particular type of unit. An explanation of the alphanumeric model number is shown below. It will enable the owner or Service Engineer to define operation, components and accessories.

CURRENT UNITS

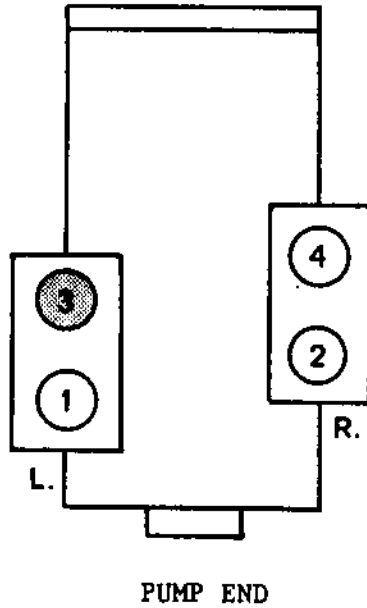


Earlier Model Number)



The Trane Company
 La Crosse, Wisconsin 54601-7589
 Printed in U.S.A.

The following sketch shows the numbering of the cylinders for the 3 and 4 cylinder compressors.



NOTE: Cylinder #3 is removed for the 3 cylinder compressor.

- A. Three Cylinder "M" Compressors Include:
 1. CRHM-100 R-12(A-J Design Sequence)
 2. CRHM-150 R-22(A-J Design Sequence)

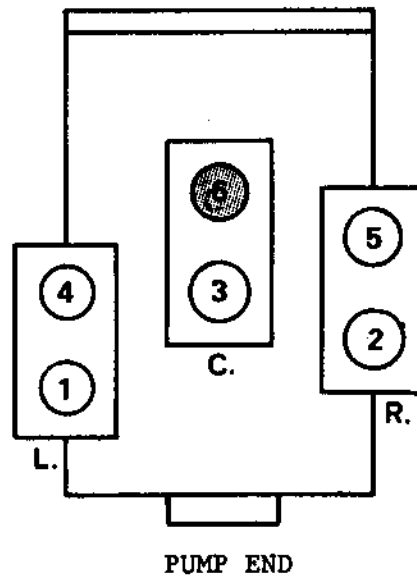
- B. Four Cylinder "M" Compressors Include:
 1. CRHM-130 R-12(A-J Design Sequence)
 2. CRHM-160 R-22(A-J Design Sequence)
 3. CRHM-200 R-22(A-J Design Sequence)

The following chart shows the unloading sequence for the 3 and 4 cylinder compressors.

4 CYL COMPRESSORS		3 CYL COMPRESSOR	
LOADING STEPS	CYLINDERS LOADED	LOADING STEPS	CYLINDERS LOADED
2 Step (1 Unloader)		2 Step (1 Unloader)	
100% Loaded	1234	100% Loaded	124
50% Loaded	X2X4	66% Loaded	X24
3 Step (2 Unloaders)		3 Step (2 Unloaders)	
100% Loaded	1234	100% Loaded	124
50% Loaded	X2X4	66% Loaded	X24
25% Loaded	X2XX	33% Loaded	X2X

X = Unloaded Cylinders

The following sketch shows the numbering of the cylinders for the 5 and 6 cylinder compressors.



NOTE: Cylinder #6 is removed for the 5 cylinder compressor.

- A. Five Cylinder "M" Compressors Include:
 1. CRHM-170 R-12 (A, B & C Design Sequence)
 2. CRHM-250 R-22 (A, B & C Design Sequence)

- B. Six Cylinder "M" Compressors Include:
 1. CRHM-170 R-12 (D, E, F, G & J Design Sequence)
 2. CRHM-190 R-12 (D, E, F, G & J Design Sequence)
 3. CRHM-25 R-22 (D, E, F, G & J Design Sequence)

The following chart shows the unloading sequence for the 5 and 6 cylinder compressors.

Loading Steps	Cylinders Loaded
2 Step (1-Unloader)	
100% Loaded	1 2 3 4 5 6
66% Loaded	12 X 4 5 X
3 Step (2-Unloaders)	
200% Loaded	1 2 3 4 5 6
66% Loaded	12 X 4 5 X
33% Loaded	X2 X X 5 X
X = Unloaded Cylinders	

CYLINDER HEAD SELECTION CHART
115 VOLT - 60 HZ CONTROL

HEAD POSITION	LEFT	CENTER	RIGHT
A. Three Cylinder CRHM-100*-1**AT CRHM-100*-2**AT CRHM-150*-1**AT CRHM-150*-2**AT	HD-104 HD-104 HD-104 HD-104	---- ---- ---- ----	HD-98 HD-100 HD-98 HD-100
B. Four Cylinder CRHM-130*-2**AT CRHM-130*-3**AT CRHM-160*-2**AT CRHM-160*-3**AT CRHM-200*-2**AT CRHM-200*-3**AT	HD-104 HD-104 HD-104 HD-104 HD-104 HD-104	---- ---- ---- ---- ---- ----	HD-98 HD-100 HD-98 HD-100 HD-98 HD-100
C. Five Cylinder CRHM-170*-3**AT (A-B-C Design) CRHM-250*-3**AT (A-B-C Design)	HD-104 HD-104	HD-104 HD-104	HD-98 HD-98
D. Six Cylinder CRHM-170*-2**AT(D-E-F-G-J Design) CRHM-170*-4**AT(D-E-F-G-J Design) CRHM-190*-2**AT CRHM-190*-4**AT CRHM-250*-2**AT(D-E-F-G-J Design) CRHM-250*-4**AT(D-E-F-G-J Design) CRHM-300*-2**AT CRHM-300*-4**AT	HD-98 HD-104 HD-98 HD-104 HD-98 HD-104 HD-98 HD-104	HD-104 HD-104 HD-104 HD-104 HD-104 HD-104 HD-104 HD-104	HD-98 HD-98 HD-98 HD-98 HD-98 HD-98 HD-98 HD-98

* Indicates Motor Voltage Which Does Not Affect Head Arrangement.

** Indicates Design Sequence Which Does Not Affect Head Arrangement Except on The 17 Ton and 25 Ton Units as Noted.

NOTE - Left Hand and Right Hand is Determined By Viewing The Pump End as Shown in The Illustration on page 3 & 4.

NOTE: Junction box position does not affect head selection.

CYLINDER HEAD SELECTION CHART
230 VOLT - 50 HZ CONTROL

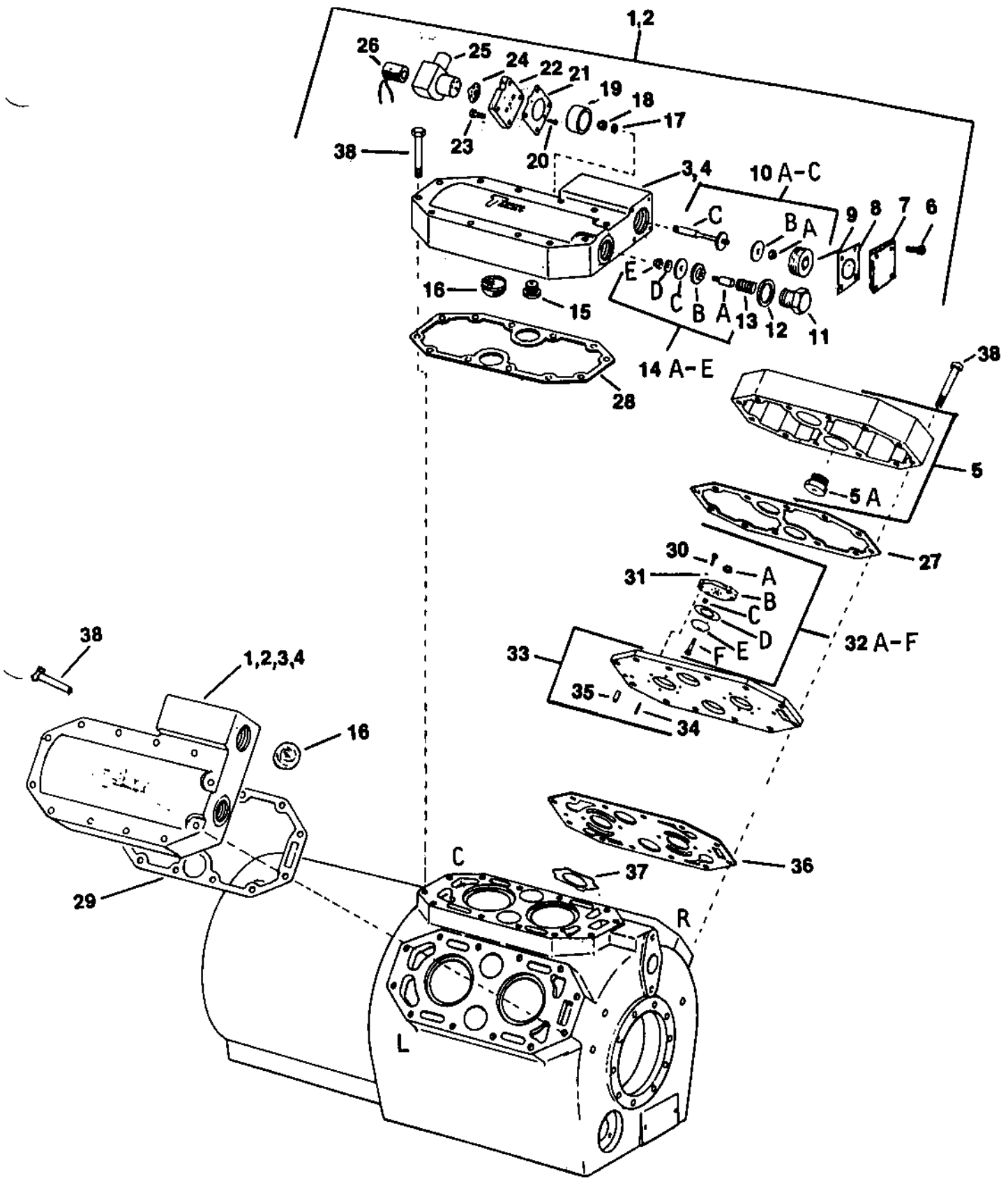
HEAD POSITION	LEFT	CENTER	RIGHT
A. Three Cylinder			
CRHM-100*-1**BT	HD-107	----	HD-98
CRHM-100*-2**BT	HD-107	----	HD-103
CRHM-150*-1**BT	HD-107	----	HD-98
CRHM-150*-2**BT	HD-107	----	HD-103
B. Four Cylinder			
CRHM-130*-2**BT	HD-107	----	HD-98
CRHM-130*-3**BT	HD-107	----	HD-103
CRHM-160*-2**BT	HD-107	----	HD-98
CRHM-160*-3**BT	HD-107	----	HD-103
CRHM-200*-2**BT	HD-107	----	HD-98
CRHM-200*-3**BT	HD-107	----	HD-103
C. Five Cylinder			
CRHM-170*-3**BT (A-B-C Design)	HD-107	HD-107	HD-98
CRHM-250*-3**BT (A-B-C Design)	HD-107	HD-107	HD-98
D. Six Cylinder			
CRHM-170*-2**BT(D-E-F-G-J Design)	HD-98	HD-107	HD-98
CRHM-170*-4**BT(D-E-F-G-J Design)	HD-107	HD-107	HD-98
CRHM-190*-2**BT	HD-98	HD-107	HD-98
CRHM-190*-4**BT	HD-107	HD-107	HD-98
CRHM-250*-2**BT(D-E-F-G-J Design)	HD-98	HD-107	HD-98
CRHM-250*-4**BT(D-E-F-G-J Design)	HD-107	HD-107	HD-98
CRHM-300*-2**BT	HD-98	HD-107	HD-98
CRHM-300*-4**BT	HD-107	HD-107	HD-98

* Indicates motor voltage which does not affect head arrangement.

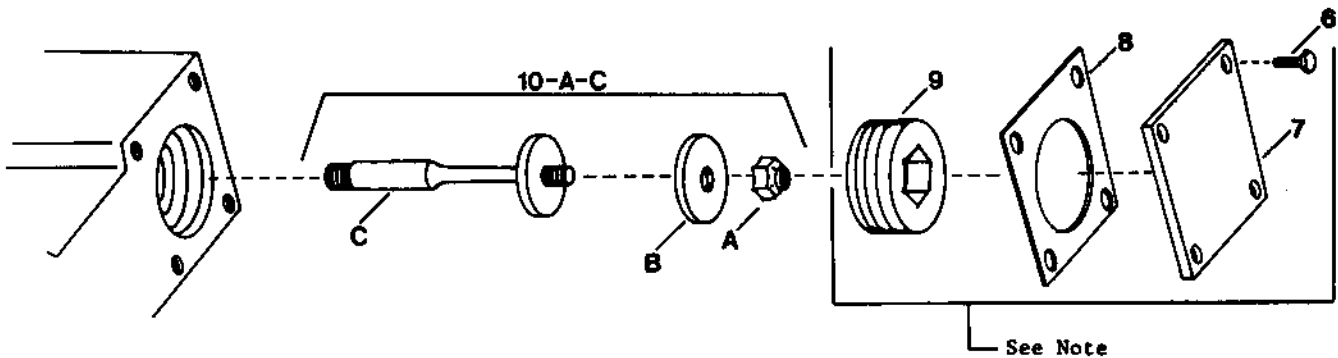
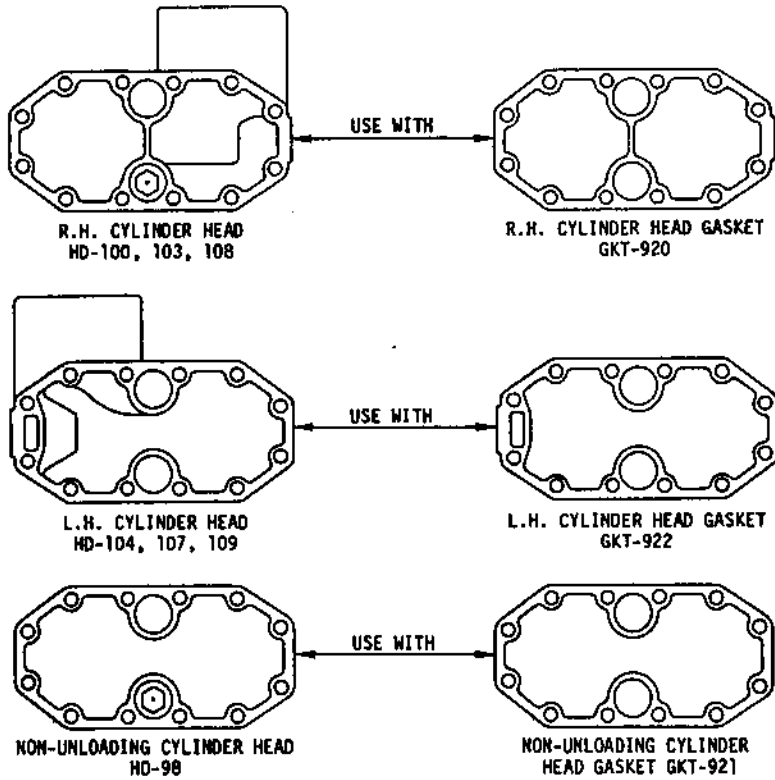
** Indicates design sequence which does not affect head arrangement except on the 17 ton and 25 ton units as noted.

NOTE: Left hand and right hand is determined by viewing the pump end as shown in the Illustration on Page 3 & 4.

NOTE - Junction Box Position Does Not Affect Head Selection.



CYLINDER HEADS AND GASKETS



NOTE - A design change was made approximately November, 1973, that replaced the plug type unloader valve closure with the plate and gasket type closure. A design sequence change was not made, so a physical description may be required to identify parts.

REF. NO.	PART NAME AND DESCRIPTION	PART NO.	QUANTITY REQUIRED			
			3 CYL.	4 CYL.	5 CYL.	6 CYL.
1	Cylinder Head, L.H., 115 Volt, 2 Cyl. Unloading, Consisting of: Items 3, 6-14 & 16-26 -----	HD-104	**	**	**	**
1	Cylinder Head, L.H., 230 Volt, 2 Cyl. Unloading, Consisting of: Items 3, 6-14 & 16-26-----	HD-107	**	**	**	**
2	Cylinder Head, R.H., 115 Volt, 2 Cyl. Unloading, Consisting of: Items 4, 6-26-----	HD-100	**	**	**	**
2	Cylinder Head, R.H., 230 Volt, 2 Cyl. Unloading, Consisting of: Items 4, 6-26-----	HD-103	**	**	**	**
3	Cylinder Head, L.H., Bare, 2 Cyl. Unloading -----	HD-109	1	1	1	1
4	Cylinder Head, R.H., Bare, 2 Cyl. Unloading-----	HD-108	1	1	1	1
5	Cylinder Head, Non-Unloading----- Including:	HD-98	**	**	**	**
5A	Valve-Relief-----	VAL-980	1+	1+	1+	1+
6	Screw-Cap, Unloader Valve Cover Plate-----	SCR-23	4	4	4	4
7	Plate-Cover, Unloader Valve-----	PLT-600	1	1	1	1
8	Gasket-Cover Plate, Unloader Valve-----	GKT-918	1+	1+	1+	1+
9	Plug-Access, Unloader Valve-----	PLU-161	1	1	1	1
10	Unloader Valve Assembly, Consisting of: Items 10, 10B, 10C-----	VAL-982	1+	1+	1+	1+
10A	Nut-Self-Locking, 5/16-24-----	NUT-231	1	1	1	1
10B	Seal-Unloader Valve-----	SEL-229	1	1	1	1
10C	Valve-Unloader-----	VAL-981	1	1	1	1
11	Plug-Check Valve (B,C,D,E,F,G and J Design)-----	PLU-160*	1	1	1	1
12	Gasket-Check Valve-----	GKT-917	1+	1+	1+	1+
13	Spring-Check Valve (B,C,D,E,F,G and J Design)-----	SPG-88*	1+	1+	1+	1+
14	Check Valve Assembly, Consisting of: Items 14A,14B,14C,14D,14E -----	VAL-983*	1+	1+	1+	1+
14A	Stem-Check Valve (B,C,D,E,F,G and J Design)----- Includes: Ring-----	STM-1* RNG-473*	1+ 1	1+ 1	1+ 1	1+ 1
14B	Retainer-Seal, Check Valve (B,C,D,E,F,G and J Design)	RTR-37*	1+	1+	1+	1+
14C	Seal-Check Valve (B,C,D,E,F,G and J Design)-----	SEL-185*	1+	1+	1+	1+
14D	Washer-Check Valve (B,C,D,E,F,G and J Design)-----	WAS-316*	1+	1+	1+	1+
14E	Nut-Self-Locking, 5/16-24 (B,C,D,E,F,G and J Design)	NUT-231*	1+	1+	1+	1+
15	Valve-Relief-----	VAL-980	1+	1+	1+	1+
16	Strainer-----	SRA-63	1+	1+	1+	1+
17	Washer-Unloader Valve-----	WAS-316	1+	1+	1+	1+
18	Nut-Self-Locking, 5/16-24-----	NUT-231	1+	1+	1+	1+
19	Piston-----	PST-40	1+	1+	1+	1+
20	Screw-Cap, Socket Head, 3/16-32 x 5/8-----	SCR-562	3	3	3	3
21	Gasket-Mounting Plate-----	GKT-918	1+	1+	1+	1+
22	Plate-Mounting, Solenoid Valve (A,B,C,D,E,F and G Design)-----	***	***	***	***	***
22	Plate-Mounting, Solenoid Valve ("J" Design)-----	PLT-556	1	1	1	1
23	Screw-Cap, Hex Head 5/16-18 x 1-----	SCR-33	4	4	4	4
24	Gasket-Solenoid Valve (A,B,C,D,E,F and G Design)----	***	***	***	***	***
24	Gasket-Solenoid Valve ("J" Design)-----	GKT-1182	1+	1+	1+	1+
25	Solenoid Valve, 115 Volt, 60 Cycle (A,B,C,D,E,F and G Design)-----	***	***	***	***	***
25	Solenoid Valve, 115 Volt, 60 Cycle ("J" Design)-----	VAL-1661	1+	1+	1+	1+
25	Solenoid Valve, 230 Volt, 50 Cycle (A,B,C,D,E,F and G Design)-----	***	***	***	***	***
25	Solenoid Valve, 230 Volt, 50 Cycle ("J" Design)-----	VAL-1662	1+	1+	1+	1+
26	Coil-Holding, 115 Volt, 50-60 Cycle, (For Asco Valves)-----	COL-1301	1+	1+	1+	1+
26	Coil-Holding, 115 Volt, 50-60 Cycle, (For Alco Valves)-----	COL-3780	1+	1+	1+	1+

(Continued on
next page)

(Continued from
previous page)

REF. NO.	PART NAME AND DESCRIPTION	PART NO.	QUANTITY REQUIRED			
			3 CYL.	4 CYL.	5 CYL.	6 CYL.
26	Coil-Holding, 230 Volt, 50 Cycle, (For Asco Valves)-	COL-1304	1+	1+	1+	1+
26	Coil-Holding, 230 Volt, 50-60 Cycle, (For Alco Valves)-----	COL-1639	1+	1+	1+	1+
27	Gasket-Cylinder Head (Use with HD-98)-----	GKT-921	2+	2+	3+	3+
28	Gasket-Cylinder Head (Use with HD-100, HD-103, HD-108)-----	GKT-920	1+	1+	1+	1+
29	Gasket-Cylinder Head (Use with HD-104, HD-107, HD-109)-----	GKT-922	1+	1+	1+	1+
30	Screw-Cap, Socket Head, 1/4-28 x 3/4 Discharge Valve Mounting-----	SCR-561	16	16	24	24
31	Lockwasher, 1/4, Discharge Valve Mounting-----	WAS-8	12	16	20	24
32	Discharge Valve Assembly (A,B,C,D and E Design)-----	Note 1 & 1A	3+	3+	3+	3+
32	Discharge Valve Assembly (F,G and J Design)----- Consisting of:	VAL-1410	3+	4+	5+	6+
32A	Locknut-Valve Cage Bolt-----	NUT-241	1	1	1	1
32B	Cage-Valve-----	CAG-31	1	1	1	1
32C	Spring-Discharge Valve-----	SPG-14	8+	8+	8+	8+
32D	Valve-Discharge-----	VAL-978	1	1	1	1
32E	Seat-Discharge Valve-----	SET-20	1	1	1	1
32F	Bolt-Valve Cage-----	BLT-99	1	1	1	1
33	Valve Plate (A,B Design)-----	Note 2	2	2	3	3
33	Valve Plate (C,D,E Design)-----	Note 3	2	2	3	3
33	Valve Plate (F,G,J Design)-----	PLT-472	2	2	3	3
34	Pin-Discharge Valve-Positioning -----	PIN-86	8	8	12	12
35	Pin-Dowel-----	PIN-87	4	4	6	6
36	Gasket-Valve Plate to Housing (A,B, Design)-----	Note 4	2	2	3	3
36	Gasket-Valve Plate to Housing (C,D, E Design)-----	GKT-969	2+	2+	3+	3+
36	Gasket-Valve Plate to Housing (F,G, J Design)-----	GKT-1039	2+	2+	3+	3+
37	Valve-Suction (A, B Design)-----	Note 5	3	4	5	6
37	Valve-Suction (C,D,E,F,G,J Design)-----	VAL-1166	3	4	5	6
38	Screw-Cap, Hex Head, 7/16-14 x 3/4, Cylinder Head Mounting-----	SCR-556	24	24	36	36

+ Recommended Spare Part

* Use individual parts on "B,C,D,E,F,G and J" design compressors only. Order complete check valve assembly (VAL-983), plus the check valve plug (PLU-160) and check valve spring (SPG-88) if any part of check valve requires replacement on "A" design sequence compressors.

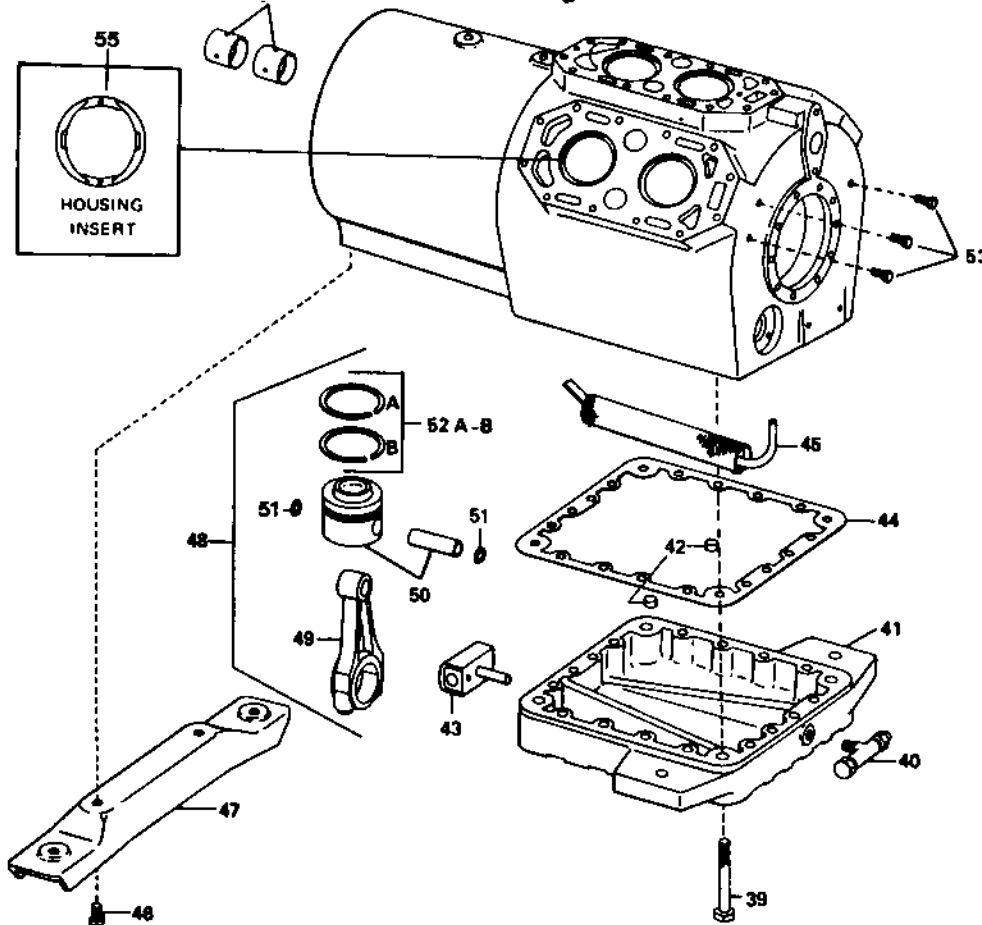
** See Head Selection Chart for Head Placement by Model Number.

*** Original equipment solenoid valve, mounting plate and gasket are no longer available. Replacement of any of these components requires complete changeout with 3 bolt hole solenoid valve, mounting plate and gasket that are now used on the "J" design compressors. See Service Bulletin H-COM-SB-29.

Note 1 - When replacing the discharge valve assy. on A-B-C-D-E design sequence compressors, you must also replace Ref. No. 33 (PLT-472), Ref. No. 36 (GKT-1039) and Ref. No. 37 (VAL-1166).

- Note 1A - On 3 and 5 cylinder A-B-C design sequence compressors a housing insert Ref. No. 55 (IRT-1) and an additional discharge valve assy. Ref. No.32, (VAL-1410) is required when replacing the single cylinder valve plate. This is needed to block off the extra cylinder hole as only a two cylinder cast plate of the new design is available.
- Note 2 - When replacing the valve plate on the A and B design sequence compressors, you must also replace Ref. No.32 (VAL-1410), Ref. No.36 (GKT-1039), Ref. No.37 (VAL-1166) and on 3 and 5 cylinder A and B design compressors Note 1A applies.
- Note 3 - When replacing the valve plate on the C-D-E design sequence compressors, you must also replace Ref. No.32 (VAL-1410) and Ref. No.36 (GKT-1039) and on 3 and 5 cylinder C design compressors Note 1A applies.
- Note 4 - When replacing the valve plate gasket on the A and B design sequence compressors, you must also replace Ref. No.32 (VAL-1410), Ref. No.33 (PLT-472), Ref. No. 36(GKT-1039), Ref. No.37 (VAL-1166) and on 3 and 5 cylinder A-B-C design compressors Note 1A applies.
- Note 5 - When replacing the suction valve on the A and B design sequence compressors, you must also replace Ref. No.32 (VAL-1410), Ref. No. 33 (PLT-472), Ref. No. 36 (GKT-1039) and on 3 and 5 cylinder A-B-C design compressors Note 1A applies.

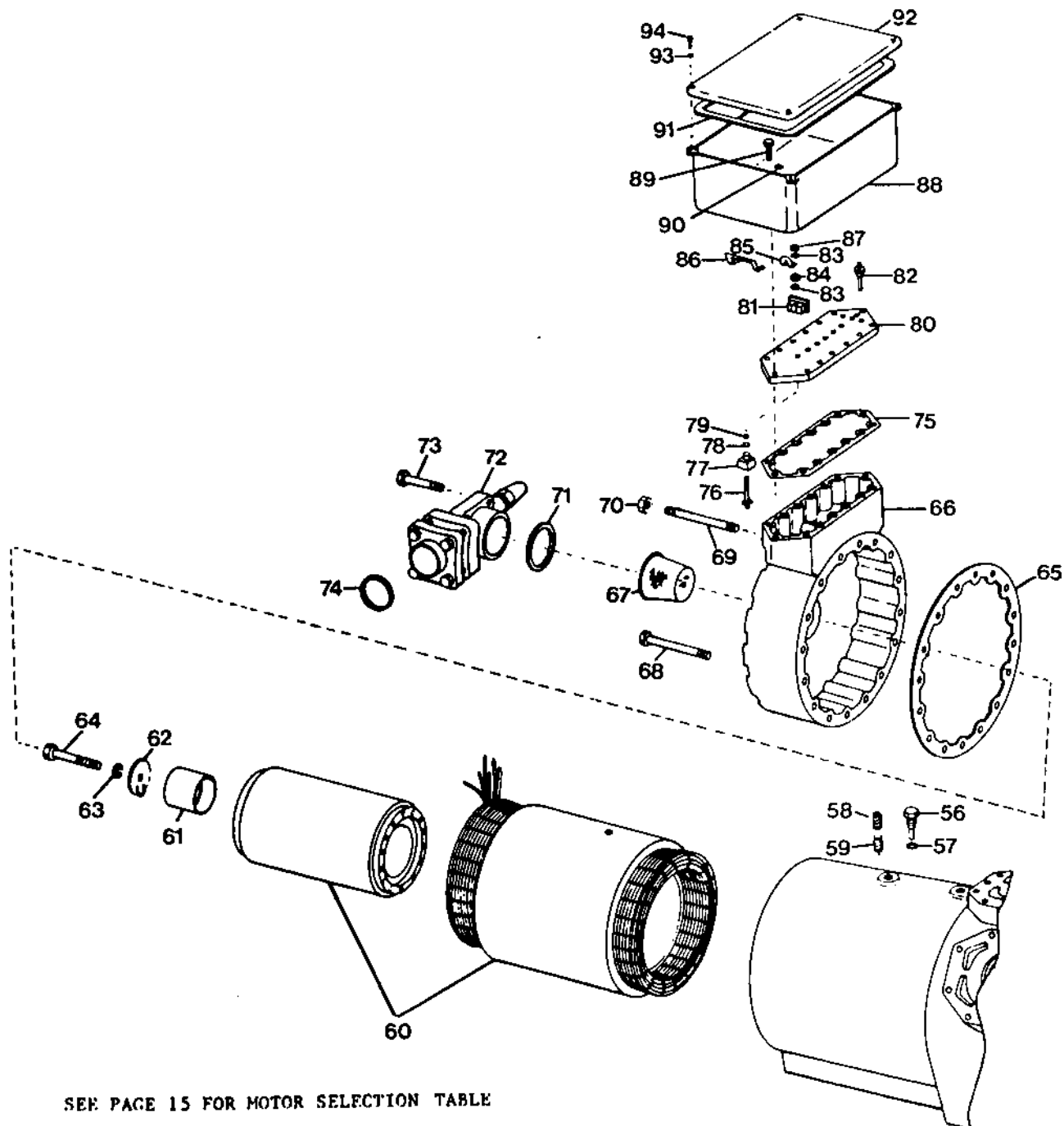
See Illustration Page 15



REF. NO.	PART NAME AND DESCRIPTION	PART NO.	QUANTITY REQUIRED			
			3 CYL.	4 CYL.	5 CYL.	6 CYL.
39	Screw-Cap, Hex Head, 7/16-14x2½, Handhole Cover to Housing -----	SCR-44	20	20	20	20
40	Valve-Oil Drain, 1/4 Pipe x 1/4 Flare -----	VAL-979	1	1	1	1
41	Cover-Handhole -----	COV-495	1	1	1	1
42	Magnet-Handhole Cover -----	MAG-2	2	2	2	2
43	Heater-Crankcase, 120 V. -----	HTR-201	1+	1+	1+	1+
43	Heater-Crankcase, 240 V. -----	HTR-202	1+	1+	1+	1+
44	Gasket-Handhole Cover -----	GKT-913	1+	1+	1+	1+
45	Strainer-Oil -----	SRA-62	1+	1+	1+	1+
46	Screw-Hex Head, 7/16-14x3/4, compressor mounting Bracket -----	SCR-560	2	2	2	2
47	Bracket-Compressor Mounting -----	BRK-340	1	1	1	1
48	Piston & Rod Assembly (Standard Lift) -----	PST-38	3+	4+	5+	6+
48	Piston & Rod Assembly (CRHM-160 Short Stroke Only) -----	PST-48		4		
48	Piston & Rod Assembly (CRHM-170 and CRHM-250 Short Stroke Only) -----	PST-46#				6
	CONSISTING OF:					
49	Rod-Connecting (Standard Lift) -----	ROD-142#	1	1	1	1
49	Rod-Connecting (CRHM-160 Short Stroke Only) -----	ROD-162		1		
49	Rod-Connecting (CRHM-170 and CRHM-250 Short Stroke Only) -----	ROD-154#				1
50	Piston and Pin Assembly -----	PST-39	1	1	1	1
51	Ring-Retaining -----	RNG-97	2	2	2	2
52	Piston Ring Kit -----	RNG-404	1+	1+	1+	1+
	CONSISTING OF:					
52A	Compression Ring-Top -----	RNG-400	1	1	1	1
52B	Compression Ring - Bottom -----	RNG-401	1	1	1	1
53	Plug-Pipe, Hex Head, 1/8 -----	PLU-20	4	4	4	4
54	Bearing Insert, Housing End(See Illustration Page 15)	BRG-262	2	2	2	2
55	Insert-Housing ("C,D,E,F,G & J" Design Sequences)-----	IRT-1	4	4	6	6

+ Recommended Spare Part

To convert a five (5) cylinder, 25 Ton Compressor to a six (6) cylinder, 25 ton Compressor, order the following parts: (1) VAL-1410, (1) PLT-472, (6) VAL-1166, (1) PST-46, (5) ROD-154, (6) IRT-1 and (1) CSF-59. See Service Bulletin No. G-102A.



SEE PAGE 15 FOR MOTOR SELECTION TABLE

REF. NO.	PART NAME AND DESCRIPTION	PART NO.	QUANTITY REQUIRED			
			3 CYL.	4 CYL.	5 CYL.	6 CYL.
56	Screw-Motor Mounting ("B,C,D,E,F,G&J" Design Sequences) -----	SCR-557	1	1	1	1
57	"O" Ring-Motor Mounting ("B,C,D,E,F,G&J" Design Sequences) -----	RNG-133	1	1	1	1
58	Plug-Access, Motor Mounting ("A" Design Sequence)	PLU-97	1	1	1	1
59	Dowel-Motor Mounting ("A" Design Sequence) ----	*	1	1	1	1
60	Motor-Hermetic (See Page 15 For Motor Selection Table) -----		1	1	1	1
61	Spacer-Motor (5 Cylinder Only) -----	SPC-80			1	
62	Washer-Retaining, Rotor to Crankshaft -----	WAS-314	1	1	1	1

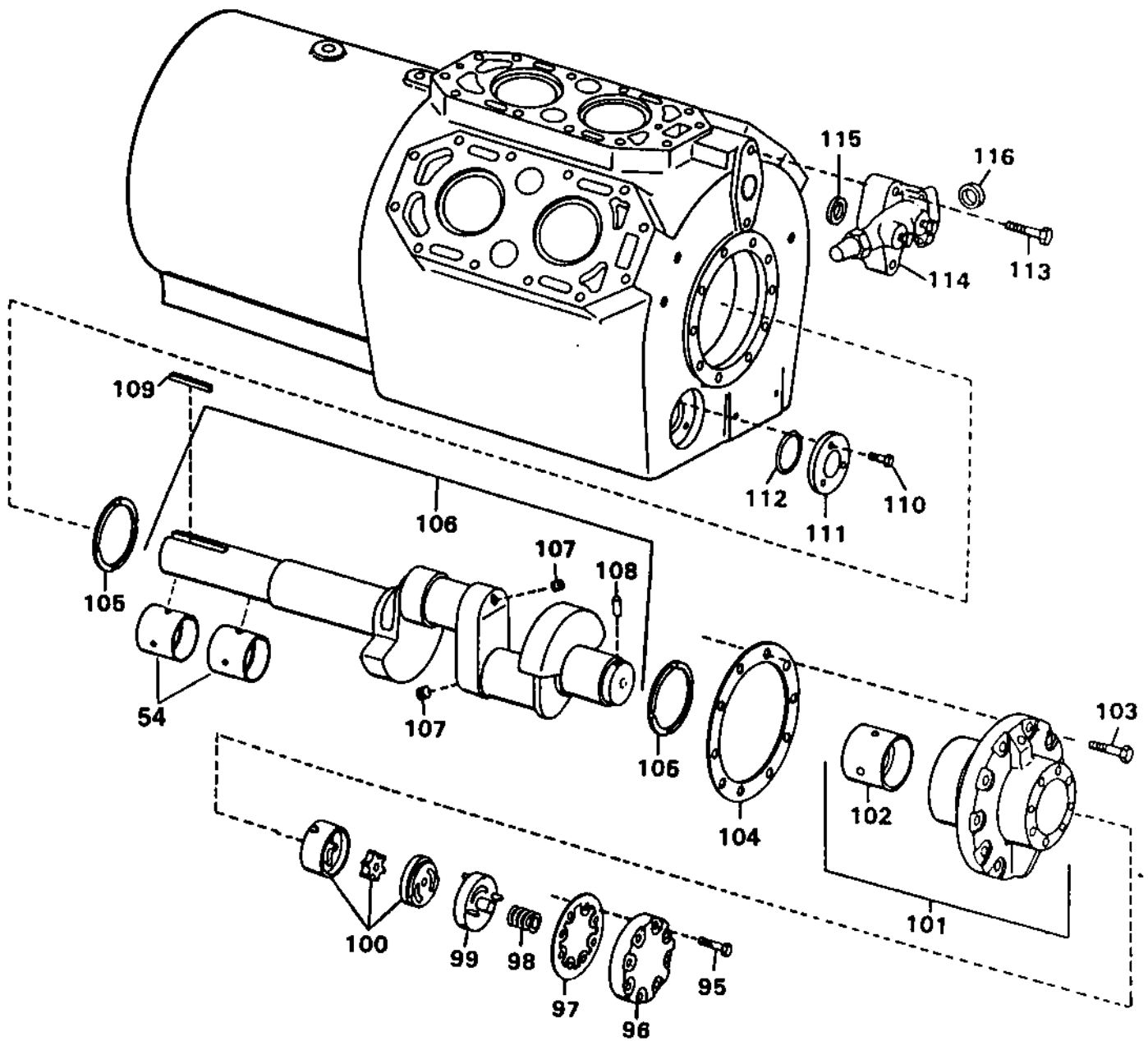
*See Service Bulletin HCOM-SB-3

REF. NO.	PART NAME AND DESCRIPTION	PART NO.	QUANTITY REQUIRED			
			3 CYL.	4 CYL.	5 CYL.	6 CYL.
63	Lockwasher-5/8, Rotor to Crankshaft -----	WAS-2	1	1	1	1
64	Screw-Cap, Hex Head, 5/8-18x2½ Rotor to Crankshaft	SCR-558	1	1	1	1
65	Gasket-Suction Cover -----	GKT-912	1	1	1	1
66	Cover-Suction -----	COV-494	1	1		
66	Cover-Suction -----	COV-497			1	1
67	Strainer-Suction Gas -----	SRA-61	1+	1+		
67	Strainer-Suction Gas -----	SRA-64			1+	1+
68	Screw-Cap, Hex Head, 7/16-14x3½ Suction Cover to Housing -----	SCR-559	14	14	14	14
69	Stud-Suction Cover Mounting, 7/16-14x15/32 -----	STU-65	2	2	2	2
70	Nut-Hex, 7/16-14, Suction Cover Mounting -----	NUT-208	2	2	2	2
71	Gasket-Suction Service Valve -----	GKT-14	1	1		
71	Gasket-Suction Service Valve -----	GKT-15			1	1
72	Valve-Suction Service, 1-5/8 O.D. -----	VAL-8	1	1		
72	Valve-Suction Service, 2-1/8 O.D. -----	VAL-9			1	1
73	Screw-Cap, Hex Head, ½-13x3½, Suction Service Valve Mounting -----	SCR-13	4	4		
73	Screw-Cap, Hex Head, 5/8-11x4½, Suction Service Valve Mounting -----	SCR-582			4	4
74	Gasket-Adapter, Suction Service Valve 1-5/8 O.D.	GKT-13	1	1		
74	Gasket-Adapter, Suction Service Valve 2-1/8 O.D.	GKT-830			1	1
75	Gasket-Terminal Plate -----	GKT-915	1	1	1	1
76	Stud-Terminal -----	STU-66	***	***	***	***
77	Insulator-Internal -----	INS-195	***	***	***	***
78	"O" Ring-1/16x3/8x½ -----	RNG-38	***	***	***	***
79	"O" Ring-1/16x½x3/8 -----	RNG-37	***	***	***	***
80	Plate-Terminal 9 Lead (A,B,C,D,E & F Design Sequence) -----	PLT-401	1	1	1	1
80	Plate-Terminal 6 Lead (A,B,C,D,E & F Design Sequence) -----	PLT-402	1	1	1	1
80	Plate-Terminal 9 Lead (G&J Design Sequence) -----	PLT-401	1	1	1	1
80	Plate-Terminal 6 Lead (G&J Design Sequence) -----	PLT-402	1	1	1	1
81	Insulator-External -----	INS-196	***	***	***	***
82	Terminal-Hermetic -----	TER-8	4+	4+	4+	4+
83	Flatwasher, 1/4 -----	WAS-315	****	****	****	****
84	Nut-Hex, 1/4-20 -----	NUT-9	***	***	***	***
85	Buss Bar, 440 Volt -----	BAR-41	3+	3+	3+	3+
85	Buss Bar, 230 Volt -----	BAR-41	1+	1+	1+	1+
86	Buss Bar, 230 Volt -----	BAR-42	1+	1+	1+	1+
87	Nut-Hex, 1/4-20 -----	NUT-77	***	***	***	***
88	Box-Junction (A,B,C and D Design Sequences) -----	BOX-124	1	1	1	1
88	Box-Junction (E and F Design Sequence) -----	BOX-136	1	1	1	1
88	Box-Junction (G & J Design Sequence) -----	BOX-137	1	1	1	1
89	Screw-Hex Head, 3/8-16x1, Terminal Plate and Junction Box Mounting -----	SCR-95	14	14	14	14
89	Screw-Cap, Hex Head, 5/16-18x½, Junction Box to Terminal Plate (E,F,G&J Design Sequences) -----	SCR-97	4	4	4	4
90	Lockwasher, 5/16, Junction Box to Terminal Plate (E,F,G & J Design Sequence) -----	WAS-335	4	4	4	4
91	Gasket-Junction Box (A,B,C, & D Design Sequence) -	GKT-916	1	1	1	1
91	Gasket-Junction Box (E & F Design Sequences) ---	GKT-988	1+	1+	1+	1+
91	Gasket-Junction Box (G & J Design Sequence)-----	GKT-988	1+	1+	1+	1+
92	Cover-Junction Box (A,B,C & D Design Sequence) -	COV-496	1	1	1	1
93	Lockwasher -----	WAS-291	4	4	4	4
92	Cover-Junction Box (E and F Design Sequence) ---	COV-581	1	1	1	1
92	Cover-Junction Box (G & J Design Sequence)-----	COV-582	1	1	1	1
94	Screw-Slotted, Hex Head, 3/16-32x1/2 -----	SCR-344	4	4	4	4

+ Recommended Spare Parts

** 6 required for 6 Lead Motor, 9 required for 9 Lead Motor.

*** 12 required for 6 Lead Motor, 18 required for 9 Lead Motor.



REF. NO.	PART NAME AND DESCRIPTION	PART NO.	QUANTITY REQUIRED			
			3 CYL.	4 CYL.	5 CYL.	6 CYL.
95	Screw-Hex Head, 5/16-18x1 -----	SCR-33	8	8	8	8
96	Cover-Oil Pump -----	COV-493	1+	1+	1+	1+
97	Gasket-Oil Pump -----	GKT-911	1+	1+	1+	1+
98	Spring-Oil Pump ("A,B,&C" Design Sequences) ---	SPG-87	1+	1+	1+	1+
98	Spring-Oil Pump ("D,E,F,G&J" Design Sequences) -	SPG-109	1+	1+	1+	1+
99	Plate-Oil Pump -----	PLT-397	1+	1+	1+	1+
100	Pump-Oil -----	PMP-414	1+	1+	1+	1+
101	Bearing Head With Insert ("A" Design Only) ----	BRG-277	1+	1+	1+	1+
101	Bearing Head With Insert ("B,C,D,E,F,G&J" Design Sequences) -----	BRG-276	1+	1+	1+	1+
102	Bearing Insert -----	BRG-262	1	1	1	1
103	Screw-Hex Head 3/8-16x1, Bearing Head - Oil Pump Mounting -----	SCR-95	10	10	10	10
104	Gasket-Bearing Head, Pump End -----	GKT-910	1+	1+	1+	1+

+ Recommended Spare Parts

REF. NO.	PART NAME AND DESCRIPTION	PART NO.	QUANTITY REQUIRED			
			3 CYL.	4 CYL.	5 CYL.	6 CYL.
105	Bearing Thrust -----	BRG-263	2+	2+	2+	2+
106	Crankshaft With Plugs, 3 Cylinder, Including Items 107, 108 ("A" Design Only)-----	CSF-52	1+			
106	Crankshaft With Plugs, 3 Cylinder, Including Items 107, 108 ("B,C,D,E,F,G & J" Design Sequences) -----	CSF-48	1+			
106	Crankshaft With Plugs, 4 Cylinder, Including Items 107, 108 (A" Design Only) -----	CSF-53		1+		
106	Crankshaft With Plugs, 4 Cylinder, Including Items 107, 108 (CRHM-130, CRHM-200; "B,C,D, E,F,G & J" Design Sequences)-----	CSF-49		1+		
106	Crankshaft With Plugs, 4 Cylinder, Including Items 107, 108 (CRHM-160, "B,C,D,E,F,G & J" Design Sequences) -----	CSF-60		1+		
106	Crankshaft, 5 Cylinder -----	**			**	
106	Crankshaft With Plugs, 6 cylinder, Including Items 107, 108 ("A" Design Only) -----	CSF-55				1+
106	Crankshaft With Plugs, 6 Cylinder, Including Items 107, 108 (CRHM-170, CRHM-250, "B,C,D, E,F,G & J" Design Sequences) -----	CSF-59				1+
106	Crankshaft With Plugs, 6 Cylinder, Including Items 107, 108 (CRHM-190, CRHM-300, "B,C,D, E,F,G & J" Design Sequences)-----	CSF-51				1+
107	Plug-Pipe -----	PLU-96	2	2	2	2
108	Pin-Roll -----	PIN-12	1	1	1	1
109	Key-Crankshaft -----	KEY-105	1	1	1	1
110	Screw-Hex Head, 1/4-20x5/8, Sight Glass Mounting	SCR-38	3	3	3	3
111	Sight Glass -----	GLS-30	1+	1+	1+	1+
112	"O" Ring - Sight Glass -----	RNG-818	1+	1+	1+	1+
113	Screw - Cap, Hex Head, 5/16-18x2, Discharge Service Valve Mounting -----	SCR-555	2	2		
113	Screw-Cap, Hex Head, 1/2-13x2, Discharge Service Valve Mounting -----	SCR-11			2	2
114	Valve-Discharge Service, 1-1/8 O.D. -----	VAL-975	1	1		
114	Valve-Discharge Service, 1-3/8 O.D. -----	VAL-76			1	1
115	Gasket-Discharge Service Valve -----	GKT-403	1+	1+		
115	Gasket-Discharge Service Valve -----	GKT-272			1+	1+
116	Gasket-Adapter, Discharge Service Valve -----	GKT-246	x	x	1+	1+
****	Kit-Gasket, 3 Cylinder and 4 Cylinder -----	KIT-494	1+	1+		
****	Kit-Gasket, 5 Cylinder and 6 Cylinder-----	KIT-495			1+	1+
****	Kit, Conversion, Top to Side Mount Junction Box	KIT-644	1+	1+	1+	1+
****	Control-Oil Safety Pressure -----	CNT-553	1+	1+	1+	1+

+ Recommended Spare Part

** To convert a five (5) cylinder, 25 Ton Compressor to a six (6)cylinder, 25 Ton Compressor, Order the following parts: (1) VAL-1410, (1) PLT-472,(6) VAL-1166, (1) PST-46, (5) ROD-154, (6) IRT-1 and (1) CSF-59. See Service Bulletin No. G-102A.

**** Not Illustrated

KIT-494 Includes: (1) GKT-910, (1) GKT-911, (1) GKT-403, (1) GKT-912, (1) GKT-913, (2) GKT-969, (1) GKT-14, (1) GKT-915, (1) GKT-916, (2) GKT-917, (2) GKT-918, (2) GKT-1182, (1) GKT-920, (1) GKT-922, (1) GKT-921, (1) RNG-818, (9) RNG-37, (9) RNG-38, (1) RNG-133, (1) GKT-1039.

KIT-495 - Includes: (1) GKT-910, (1) GKT-911, (1) GKT-272, (1) GKT-912, (1) GKT-913, (2) GKT-969, (1) GKT-15, (1) GKT-915, (1) GKT-916, (2) GKT-917, (2) GKT-918, (2) GKT-1182, (1) GKT-920, (2) GKT-922, (2) GKT-921, (1) RNG-818, (9) RNG-37, (9) RNG-38, (1) RNG-133, (3) GKT-1039.

KIT-644 Includes: (1) RNG-133, (1) GKT-912, (1) GKT-14, (1) GKT-15, (1) GKT-915, (9) RNG-38, (18) RNG-37, (1) Form 1-27.33 Instruction Sheet.

MOTOR DESCRIPTION	PART NO.
Motor - Hermetic, 200/60/3 (CRHM-100A) -----	MOT-1152
Motor - Hermetic, 230-460/60/3 (CRHM-100B) -----	*
Motor - Hermetic, 230/60/3 (CRHM-100W) -----	MOT-1491
Motor - Hermetic, 460/60/3 (CRHM-100C) -----	MOT-1398
Motor - Hermetic, 575/60/3 (CRHM-100D) -----	MOT-1399
Motor - Hermetic, 200/60/3 (CRHM-130A) -----	MOT-1400
Motor - Hermetic, 230-460/60/3 (CRHM-130B) -----	*
Motor - Hermetic, 230/60/3 (CRHM-130W) -----	MOT-1194
Motor - Hermetic, 460/60/3 (CRHM-130C) -----	MOT-1401
Motor - Hermetic, 575/60/3 (CRHM-130D) -----	MOT-1402
Motor - Hermetic, 200/60/3 (CRHM-150A) -----	MOT-1154
Motor - Hermetic, 230-460/60/3 (CRHM-150B) -----	*
Motor - Hermetic, 230/60/3 (CRHM-150W) -----	MOT-1492
Motor - Hermetic, 460/60/3 (CRHM-150C) -----	MOT-1403
Motor - Hermetic, 575/60/3 (CRHM-150D) -----	MOT-1404
Motor - Hermetic, 200/60/3 (CRHM-160A) (CRHM-170A) -----	MOT-1405
Motor - Hermetic, 230-460/60/3 (CRHM-160B) (CRHM-170B) -----	*
Motor - Hermetic, 230/60/3 (CRHM-160W) (CRHM-170W) -----	MOT-1406
Motor - Hermetic, 460/60/3 (CRHM-160C) (CRHM-170C) -----	MOT-1407
Motor - Hermetic, 575/60/3 (CRHM-160D) (CRHM-170D) -----	MOT-1408
Motor - Hermetic, 200/60/3 (CRHM-190A) (CRHM-200A) -----	MOT-1156
Motor - Hermetic, 230-460/60/3 (CRHM-190B) (CRHM-200B) -----	*
Motor - Hermetic, 230/60/3 (CRHM-190W) (CRHM-200W) -----	MOT-1493
Motor - Hermetic, 460/60/3 (CRHM-190C) (CRHM-200C) -----	MOT-1158
Motor - Hermetic, 575/60/3 (CRHM-190D) (CRHM-200D) -----	MOT-1159
Motor - Hermetic, 200/60/3 (CRHM-250A) -----	MOT-1160
Motor - Hermetic, 230-460/60/3 (CRHM-250B) -----	*
Motor - Hermetic, 230/60/3 (CRHM-250W) -----	MOT-1494
Motor - Hermetic, 460/60/3 (CRHM-250C) -----	MOT-1162
Motor - Hermetic, 575/60/3 (CRHM-250D) -----	MOT-1163
Motor - Hermetic, 200/60/3 (CRHM-300A) -----	MOT-1164
Motor - Hermetic, 230-460/60/3 (CRHM-300B) -----	*
Motor - Hermetic, 230/60/3 (CRHM-300W) -----	MOT-1495
Motor - Hermetic, 460/60/3 (CRHM-300C) -----	MOT-1166
Motor - Hermetic, 575/60/3 (CRHM-300D) -----	MOT-1167

NOTE: A gasket and "O" Ring kit is included with each motor.

* Nine lead, dual voltage (230-460/60/3) motors are no longer available. Determine operating voltage and select correct single voltage, six lead replacement motor from the above chart.

For further information on this product or other Trane products, refer to the "Trane Service Literature Catalog", ordering number IDX-IOM-1. This catalog contains listings and prices for all service literature sold by Trane. The catalog may be ordered by sending a \$20.00 check to: The Trane Company, Service Literature Sales, 3800 Pammel Creek Road, La Crosse, WI 54601.