



TRANE

**SEMI-HERMETIC
RECIPROCATING
COMPRESSOR**

HCOM-UP-40E

Unit Parts

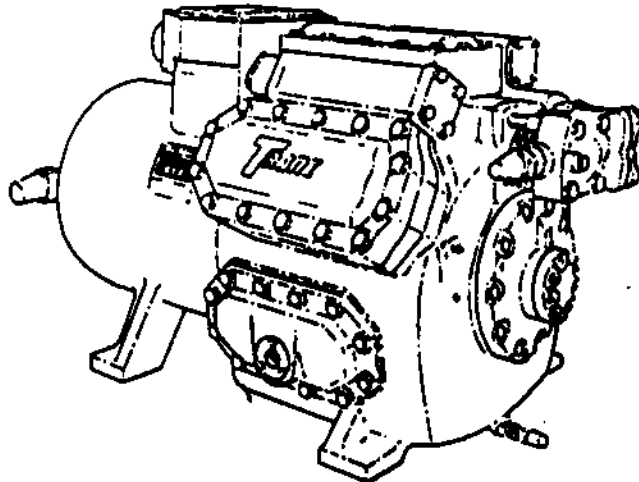
Model(s)

Model "R"

4 Cylinder "H" Design, 35 Ton

4 Cylinder "B,C,D,E,F,G & H" Designs, 40 Ton

6 Cylinder "C,D,E,F,G & H" Designs, 50 & 60 Ton



Library	Unit Parts Literature
Product Section	Refrigeration
Product	Compressor-Condensing Unit
Model	HCOM
Literature Type	Unit Parts
Sequence	40E
Date	December, 1990
File No.	UP-RF-COM-HCOM-UP-40E-1290
Supersedes	HCOM-UP-40D-490

Literature Change:
Added New Model Number

This parts list is designed for ease of parts selection. Wherever possible, the parts list allows parts selection without the use of the Trane model number. Parts may be selected from the illustrations and/or tables from the parts index located at the back of the parts list.

Contact your local Trane Parts Center for assistance or identification of any parts not identified in this parts list.

Since The Trane Company has a policy of continuous product improvement and parts standardization, it reserves the right to change specifications and design without notice. This parts list identifies known standardized parts and other parts changed by standardization. The installation and servicing of this equipment should be done by qualified, experienced technicians.

OLD MODEL NUMBER DESCRIPTION

C R H R - 600 C - 4 H A T
 1 2 3 4 5 6 7 8 9 10 11 12

1st Digit

Unit

C = Compressor

2nd Digit

Type of Compressor

R = Reciprocating Piston

3rd Digit

Type of Drive

H = Hermetic

4th Digit

Development Sequence

R = 1750 RPM Horizontal Serviceable

5th, 6th & 7th Digit

Nominal Size Displacement & Number of Cylinders

Development Sequence	Refrigerant	Cu. In. Rev.	No. Cylinders
350 - R	R-22 & R502	85.48	4 Std. Lift Valves
400 - R	R-22 & R502	102.08	4 Std. Lift Valves
500 - R	R-22 & R502	128.19	6 Std. Lift Valves
600 - R	R-22 & R502	153.12	6 Std. Lift Valves
260 - R	R-12	102.08	4 Std. Lift Valves
320 - R	R-12	128.19	6 Std. Lift Valves
380 - R	R-12	153.12	6 Std. Lift Valves
401 - R	R-22 & R502	102.08	4 Low Lift Valves
501 - R	R-22 & R502	128.19	6 Low Lift Valves
601 - R	R-22 & R502	153.12	6 Low Lift Valves
261 - R	R-12	102.08	4 Low Lift Valves
321 - R	R-12	128.19	6 Low Lift Valves
381 - R	R-12	153.12	6 Low Lift Valves

8th Digit

Electrical Characteristics

Nominal	Min. Volts	Max. Volts
A = 200/60/3	180	220
B = 230/480/60/3	207/253	414/508
C = 480/60/3	416	508
D = 575/60/3	520	636
F = 220/60/3	198	253
G = 400/60/3	343	458
W = 230/60/3	208	254
Y = 200/60/3	180	220

9th Digit

Number of Cylinders That Unload

0 = None

1 = One Cylinder

2 = Two Cylinder

3 = Three Cylinder

4 = Four Cylinder

10th Digit

Design Sequence

A

B

C

Etc.

11th Digit

A = 115 VAC

B = 230 VAC

12th Digit

Junction Box

T = Top

S = Side

NEW MODEL NUMBER DESCRIPTION

C R H R - 4 0 0 K - 2 * A O
 1 2 3 4 5,6,7 8 9 10 11 12

DIGIT 1
 POSITIVE DISPLACEMENT
 REFRIGERANT COMPRESSOR

DIGIT 2
 R = RECIPROCATING

DIGIT 3
 H = HERMETIC, INTERNAL MOTOR

DIGIT 4
 COMPRESSOR MODEL AND
 DEVELOPMENT SEQUENCE
 R = 1750 RPM HORIZONTAL SERVICEABLE CAST IRON

DIGIT 5,6,7
 NOMINAL COMPRESSOR SIZE
 SUCTION VALVE LIFT
 REFRIGERANT COMPATABILITY
 COMPRESSOR DIGIT 5,6,7

MODEL	SIZE	REFRIGERANT	CU. IN. PER REV	NO. CYL	SPECIAL FEATURE
R	350	R-22/R-502	85.46	4	STD. LIFT VALVE
R	400	R-22/R-502	102.08	4	STD. LIFT VALVE
R	500	R-22/R-502	128.19	6	STD. LIFT VALVE
R	600	R-22/R-502	153.12	6	STD. LIFT VALVE
R	351	R-22/R-502	85.46	4	LOW LIFT VALVE
R	401	R-22/R-502	102.08	4	LOW LIFT VALVE
R	501	R-22/R-502	128.19	6	LOW LIFT VALVE
R	601	R-22/R-502	153.12	6	LOW LIFT VALVE

DIGIT 8
 COMPRESSOR MOTOR FREQUENCY
 AND VOLTAGE

NOMINAL	MIN. VOLTS	MAX. VOLTS
A = 200-60-3	180	220
B = 230/460-60-3	207/414	254/506
C = 460-60-3	414	508
D = 575-60-3	518	635
E = 200/400-50-3	180/343	220/456
F = 220-50-3	198	254 (242 ON MODEL E)
G = 400-50-3	343	456
H = 208/230-60-1	197	254
J = 200/230-60-3	180	254
K = 200/220-50-3	180	254
L = 400-50-3/460-60-3	340/414	460/508
M = 208-50/60-3	198	229
N = 230-50/60-1	215	254
O = 115-60-1	109	128
P = OPEN		
Q = 208-400-3	198	229
R = 200-50-3/230-60-3	180/207	220/254
S = 208-60-3	187	254
T = SPECIAL		
U = 200-50/60-3	180	220
V = 346-50-3	308	381
W = 230-60-3	208	254
X = 380-60-3	342	418
Y = 200-50-3	180	220
Z = 363-50-3	327	399

BLANK = CAST IRON HERMETIC W/O MOTOR (EPINAL)

DIGIT 9
 COMPRESSOR UNLOADING
 NUMBER OF CYLINDERS THAT UNLOAD
 0 = NO UNLOADING
 1 = MODELS E,F,K,R
 2 = MODELS E,F,K,R
 3 = MODELS E,F,K,R
 4 = MODELS E,F,K,R

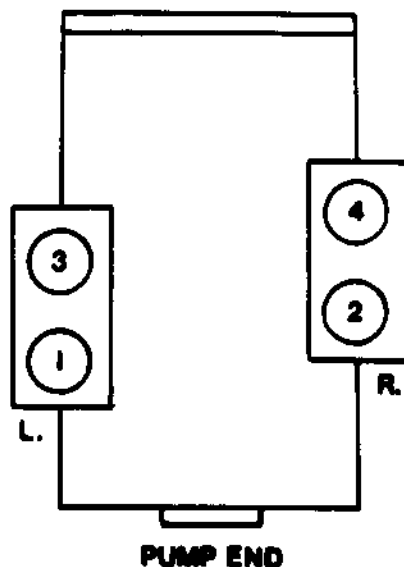
DIGIT 10
 DESIGN SEQUENCE
 A
 B
 C
 ETC.

NOTE: REMANUFACTURED COMPRESSOR WILL HAVE "R" AS THE 10TH DIGIT.

DIGIT 11
 UNLOADER CONTROL AND
 UNLOADING METHOD
 0 = NO UNLOADING
 A = 115 VAC, ELECTRIC, MODELS E,F,K,R
 B = 230 VAC, ELECTRIC, MODELS E,F,K,R
 C = 12 VDC, ELECTRIC, MODELS E,F,K,R
 E = 32 VDC, ELECTRIC, MODELS E,F,K,R
 F = 64 VDC, ELECTRIC, MODELS E,F,K,R
 G = 187 VDC, ELECTRIC, MODELS E,F,K,R
 H = 24 VAC, ELECTRIC, MODELS E,F,K,R

DIGIT 12
 BASIC COMPRESSOR VARIATION
 0 = STANDARD COMPRESSOR
 4 = SIDE JUNCTION BOX LOCATION,
 MODEL R 4-CYLINDER ONLY

The following sketch shows the numbering of the cylinders for the four cylinder compressor.



Four Cylinder "R" Compressors Include:

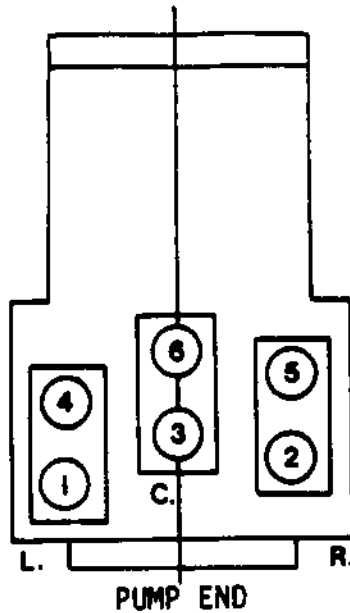
- | | | |
|-------------|------|-----------------------------------|
| 1. CRHR-260 | R-12 | (B,C,D,E,F,G & H DESIGN SEQUENCE) |
| 2. CRHR-261 | R-12 | (B,C,D,E,F,G & H DESIGN SEQUENCE) |
| 3. CRHR-400 | R-22 | (B,C,D,E,F,G & H DESIGN SEQUENCE) |
| 4. CRHR-401 | R-22 | (B,C,D,E,F,G & H DESIGN SEQUENCE) |
| 5. CRHR-350 | R-22 | (H DESIGN SEQUENCE) |
| 6. CRHR-351 | R-22 | (H DESIGN SEQUENCE) |

The following chart shows the unloading sequence for the four cylinder compressor.

LOADING STEPS	CYLINDERS LOADED
2 STEP (1 Unloader)	
100% Loaded	1 2 3 4
50% Loaded	X 2 X 4
3 STEP (2 Unloaders)	
100% Loaded	1 2 3 4
50% Loaded	X 2 X 4
25% Loaded	X 2 X X

X= UNLOADED CYLINDERS

The following sketch shows the numbering of the cylinders for the six cylinder compressors.



Six Cylinder "R" Compressors Include:

1. CRHR-320	R-12	(C,D,E,F,G & H DESIGN SEQUENCE)
2. CRHR-321	R-12	(C,D,E,F,G & H DESIGN SEQUENCE)
3. CRHR-380	R-12	(C,D,E,F,G & H DESIGN SEQUENCE)
4. CRHR-381	R-12	(C,D,E,F,G & H DESIGN SEQUENCE)
5. CRHR-500	R-22	(C,D,E,F,G & H DESIGN SEQUENCE)
6. CRHR-501	R-22	(C,D,E,F,G & H DESIGN SEQUENCE)
7. CRHR-600	R-22	(C,D,E,F,G & H DESIGN SEQUENCE)
8. CRHR-601	R-22	(C,D,E,F,G & H DESIGN SEQUENCE)

The following chart shows the unloading sequence for the six cylinder compressor.

LOADING STEPS	CYLINDERS LOADED
2 STEP (1 Unloader)	
100% Loaded	123456
66% Loaded	12X45X
3 STEP (2 Unloaders)	
100% Loaded	123456
66% Loaded	12X45X
33% Loaded	X2XX5X

X=UNLOADED CYLINDERS

CYLINDER HEAD SELECTION CHART - 1 LT - 60 HZ. CONTROL

FOUR CYLINDER		LEFT	CENTER	RIGHT
9th DIGIT	11th DIGIT			
2	A	HD-130	-	HD-140
3	A	HD-130	-	HD-134

SIX CYLINDER		LEFT	CENTER	RIGHT
9th DIGIT	11th DIGIT			
2	A	HD-140	HD-130	HD-140
4	A	HD-130	HD-130	HD-140

Notes:

- Left Hand and Right Hand is determined by viewing the Pump End as shown in the illustrations on Pages 4 and 5.
- Control Box Position does not affect Head Selection.

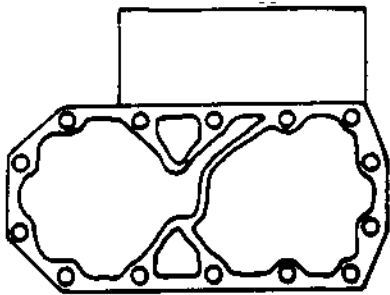
CYLINDER HEAD SELECTION CHART - 230 VOLT - 50 HZ. CONTROL

FOUR CYLINDER		LEFT	CENTER	RIGHT
9th DIGIT	11th DIGIT			
2	B	HD-133	-	HD-140
3	B	HD-133	-	HD-137
SIX CYLINDER		LEFT	CENTER	RIGHT
9th DIGIT	11th DIGIT			
2	B	HD-140	HD-133	HD-140
4	B	HD-133	HD-133	HD-140

Notes:

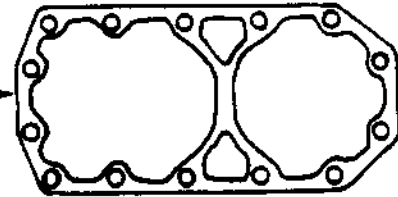
- Left Hand and Right Hand is determined by viewing the Pump End as shown in the illustrations on Pages 4 and 5.
- Junction Box Position does not affect Head Selection.

CYLINDER HEADS AND GASKETS

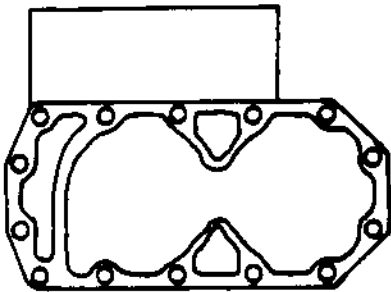


R.H., 1-Cyl. Unloading
HD-134, HD-137, HD-139

Use with

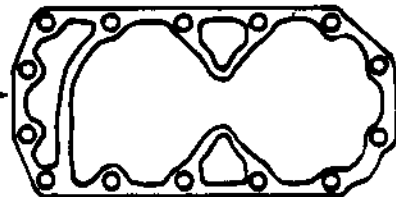


R.H. Cyl. Head Gasket
GKT-950

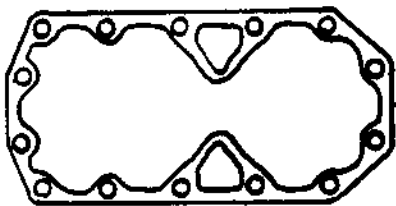


L.H., 2-Cyl. Unloading
HD-130, HD-133, HD-138

Use with

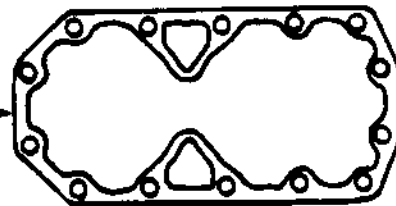


L.H. Cyl. Head Gasket
GKT-949

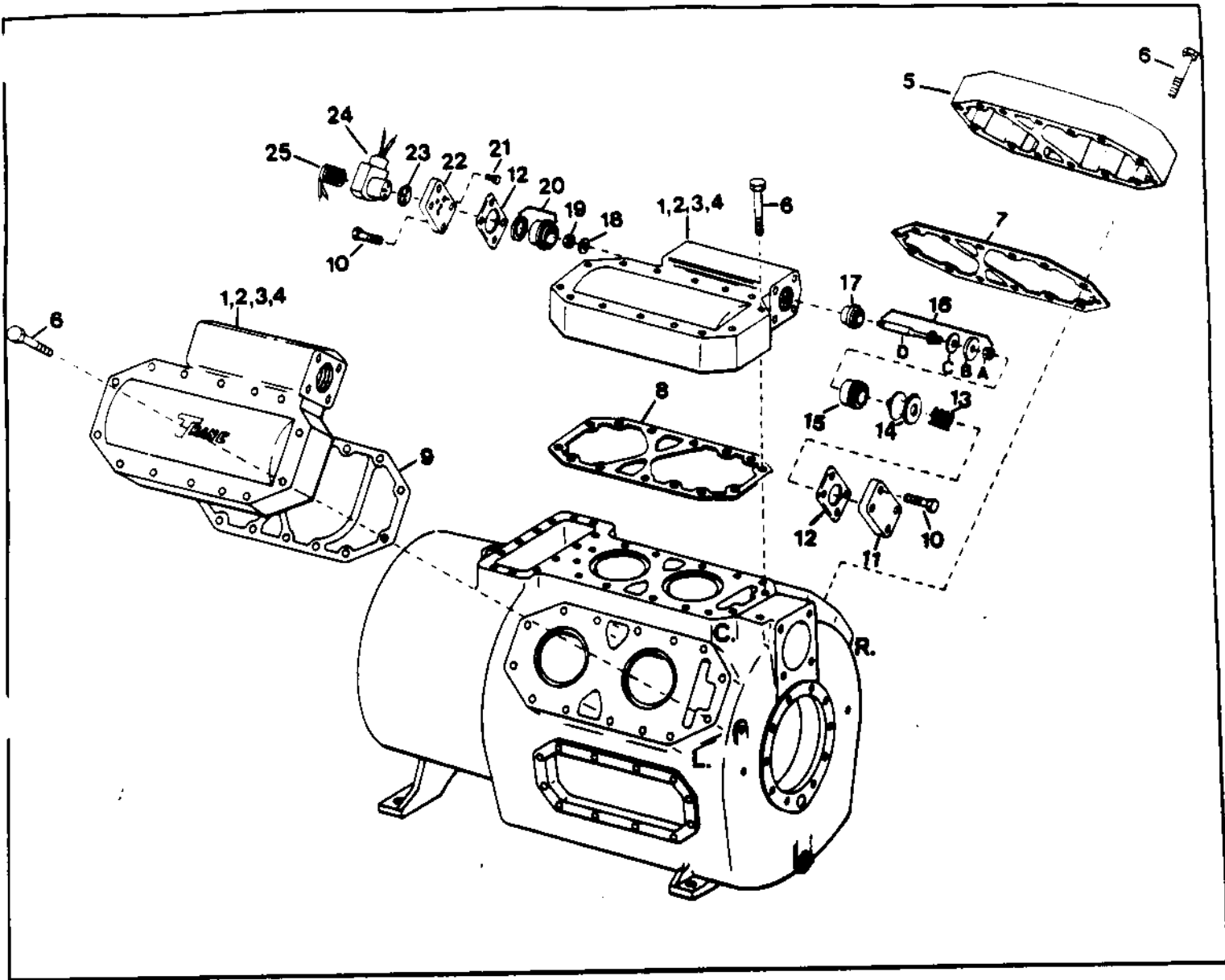


Non-Unloading
HD-140

Use with



Non-Unloading Head Gasket
GKT-951



NOTE: Head arrangement shown is for a typical 6 cylinder compressor with 4 cylinder unloading. See head selection chart for head replacement by model number.

REF. NO.	PART NAME AND DESCRIPTION	PART NO.	CRHR-260	CRHR-320	CRHR-380
			CRHR-350, 401	CRHR-500, 501	CRHR-600, 601
REF. NO.	PART NAME AND DESCRIPTION	PART NO.	NO. REQ.	NO. REQ.	NO. REQ.
1	Cylinder Head-L.H., 115 Volt, 2 Cyl. Unloading (Consisting of Items 3 and 10 thru 27)-----	HD-130	*	*	*
1	Cylinder Head-L.H., 230 Volt, 2 Cyl. Unloading (Consisting of Items 3 and 10 thru 27)-----	HD-133	*	*	*
2	Cylinder Head-R.H., 115 Volt, 1 Cyl. Unloading (Consisting of Items 4 and 10 thru 27)-----	HD-134	*	*	*
2	Cylinder Head-R.H., 230 Volt, 1 Cyl. Unloading (Consisting of Items 4 and 10 thru 27)-----	HD-137	*	*	*
3	Cylinder Head-L.H., Bare, 2 Cyl. Unloading-----	HD-138	1	1	1
4	Cylinder Head-R.H., Bare, 1 Cyl. Unloading-----	HD-139	1	-	-
5	Cylinder Head-Non Unloading-----	HD-140	*	*	*
6	Screw-Cap, Hex. Head, 1/2-13 x 3/4, Cylinder Head Mounting-----	SCR-13	28	42	42
7	Gasket-Cylinder Head (Use with HD-140)---	GKT-951	AR	AR	AR
8	Gasket-Cylinder Head (Use with HD-134, HD-137, HD-139)-----	GKT-950	AR	AR	AR
9	Gasket-Cylinder Head (Use with HD-130, HD-133, HD-138)-----	GKT-949	AR	AR	AR
10	Screw-Cap, Hex. Head, 3/8-16 x 1 1/4----	SCR-138	8	8	8
11	Cover-Check Valve ("B & C" Design Seq.)-	***	1	1	1
11	Cover-Check Valve ("D,E,F,G & H Design Seq.)-----	COV-632	1	1	1
12	Gasket-Check Valve-----	GKT-948	2+	2+	2+
13	Spring-Check Valve ("D,E,F,G & H" Design Sequences)-----	SPG-134	1+	1+	1+
14	Valve-Check ("B & C" Design Seq.)-----	***	1	1	1
14	Valve-Check ("D,E,F,G & H" Design Seq.)-	VAL-1675	1+	1+	1+
15	Bushing-Check Valve-----	BUS-105	1	1	1
16	Valve-Unloader Assembly-----	VAL-1118	1+	1+	1+
16A	Consisting of: Nut, 7/16-20-----	NUT-234	1	1	1
16B	Retainer-----	RTR-49	1	1	1
16C	Seal-----	SEL-194	1	1	1
16D	Valve-Unloader-----	VAL-1120	1	1	1
17	Bushing-Unloader Valve-----	BUS-106	1	1	1
18	Washer-Unloader Valve, 3/8-----	WAS-99	1	1	1
19	Nut-Unloader Valve, 3/8-24-----	NUT-235	1	1	1

REF. NO.	PART NAME AND DESCRIPTION	PART NO.	CRHR-260	CRHR-320	CRHR-380
			351	501	601
			CRHR-400, 401	CRHR-500, 501	CRHR-600, 601
			NO. REQ.	NO. REQ.	NO. REQ.
20	Piston-Unloader Assembly----- Consisting of:	PST-49	1+	1+	1+
20A	Piston-----	PST-42	1	1	1
20B	Ring-----	RNG-448	1	1	1
21	Screw-Socket Hex. Head, 3/16-32 x 5/8--	SCR-562	2	2	2
22	Plate-Mounting, Solenoid Valve ("B,C,D" Design Sequence)-----	**	**	**	**
22	Plate-Mounting, Solenoid Valve ("E,F,G & H" Design Sequence)-----	PLT-557	1	1	1
23	Gasket-Mounting Plate, Solenoid Valve ("B,C,D" Design Sequence)-----	**	**	**	**
23	Gasket-Mounting Plate, Solenoid Valve (E,F,G & H" Design Sequence)-----	GKT-1182	1+	1+	1+
24	Valve-Solenoid, 230 Volt, 50 Hz., ("B,C,D" Design Sequence)-----	**	**	**	**
24	Valve-Solenoid, 230 Volt, 50 Hz., ("E,F,G & H" Design Sequence)-----	VAL-1662♦	1+	1+	1+
24	Valve-Solenoid, 115 Volt, 60 Hz., ("B,C,D" Design Sequence)-----	**	**	**	**
24	Valve-Solenoid, 115 Volt, 60 Hz., ("E,F,G & H" Design Sequence)-----	VAL-1661♦	1+	1+	1+
25	Coil-Holding, ASCO, 115 Volt, 60 Hz.---	COL-1301	1+	1+	1+
25	Coil-Holding, ALCO, 115 Volt, 50-50 Hz---	COL-1638	1+	1+	1+
25	Coil-Holding, ASCO, 230 Volt, 50 Hz.---	COL-1304	1+	1+	1+
25	Coil-Holding, ALCO, 200-230 Volt, 50-60 Hz.-----	COL-1639	1+	1+	1+

+ Recommended Spare Part

AR As Required

* See Head Selection Chart for Head Replacement by Model Number.

** Original equipment solenoid valve, mounting plate and gasket are no longer available. Replacement of any of these components requires complete changeout with 3 bolt hole solenoid valve, mounting plate and gasket that are now used on the current design compressors. See Service Bulletin HCOM-SB-29A.

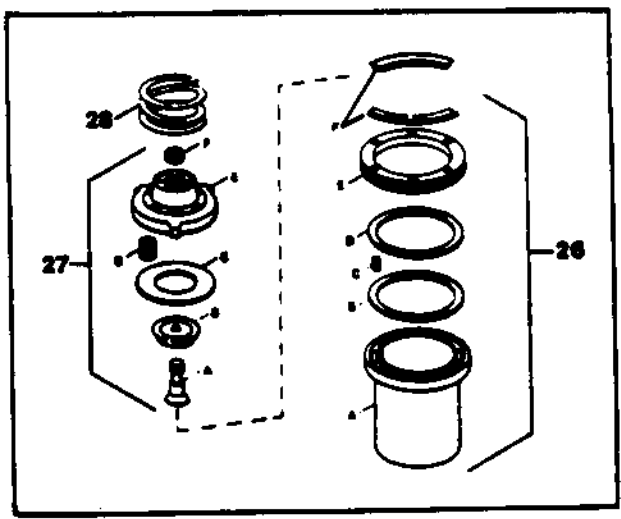
***The Check Valve Assembly(VAL-1119) and Check Valve Cover(COV-529) for "B" and "C" Design Model "R" Compressor are no longer available. when either of the parts are required, a Kit must be ordered to changeout to current design parts. The Kit is part number KIT-686, which consists of COV-632, VAL-1675, and SPG-134. Reference Service Bulletin HCOM-SB-27.

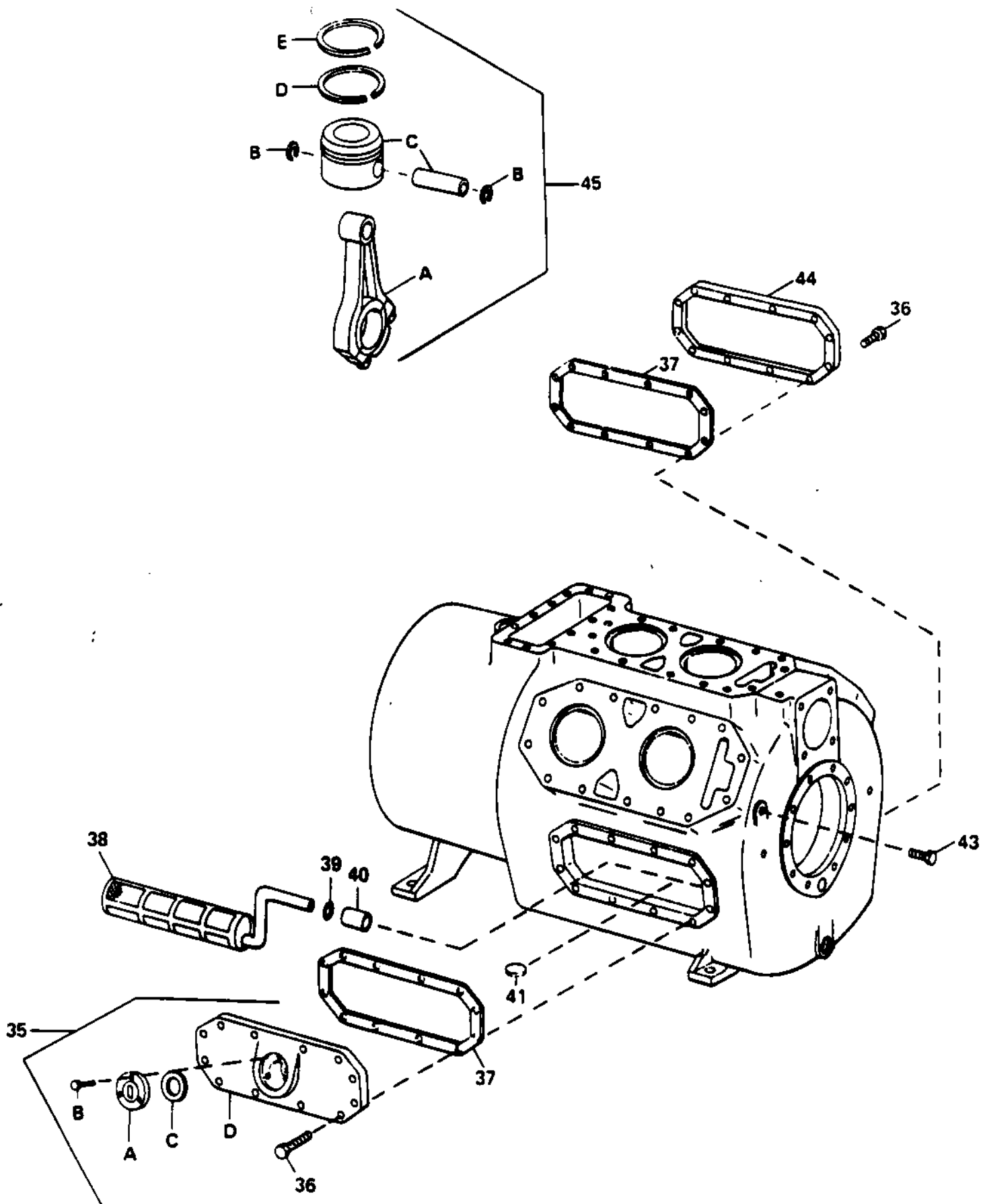
♦ Replacement Coil selected by voltage and manufacturer.

CRHR-260
CRHR-350
CRHR-400
CRHR-320
CRHR-500
CRHR-380
CRHR-600
CRHR-261
CRHR-351
CRHR-401
CRHR-501
CRHR-601

REF. NO.	PART NAME AND DESCRIPTION	PART NO.	NO. REQ.	NO. REQ.	NO. REQ.	NO. REQ.	NO. REQ.
26	Cylinder Liner Assembly-----	LNR-38	4+	6+	6+		
26	Cylinder Liner Assembly (Low Lift)- Consisting of:	LNR-42				4	6
26A	Liner-----	LNR-39	1+	1+	1+	1+	1+
26B	Valve-Suction-----	VAL-1123	1+	1+	1+	1+	1+
26C	Spring (4 Cyl., Design "B", 6 Cyl., Design "C") Standard & Low Lift-----	*	*	*	*	*	*
26C	Spring (4 Cyl., Design "C,D,E,G", 6 Cyl., Design "D,E,G")-----	SPG-116	6+	6+	6+	3+	3+
26C	Spring(Design "F, H")-----	SPG-154	6+	6+	6+	3+	3+
26D	"O" Ring-----	RNG-410	1+	1+	1+	1+	1+
26E	Plate-Valve (4 Cyl. Design "B,C,D, E,G), 6 Cyl. Design "C,D,E,G")-----	*	*	*	*	*	*
26E	Plate-Valve (Design "F & H")-----	PLY-570	1+	1+	1+		
26E	Plate-Valve (Low Lift) Design "F & H"-----	PLT-684				1	1
26F	Retainer-----	RTR-94**	2	2	2	2	2
27	Discharge Valve Assembly----- Consisting of:	VAL-1121	4+	6+	6+	4+	6+
27A	Bolt-Valve Cage-----	BLY-63	1	1	1	1	1
27B	Seat-----	SET-22	1	1	1	1	1
27C	Valve-----	VAL-1122	1+	1+	1+	1+	1+
27D	Spring-----	SPG-56	6+	6+	6+	6+	6+
27E	Cage-----	CAG-29	1	1	1	1	1
27F	Locknut-Valve Cage Bolt-----	NUT-71	1	1	1	1	1
28	Spring-Cylinder-----	SPG-95	4	6	6	4	6

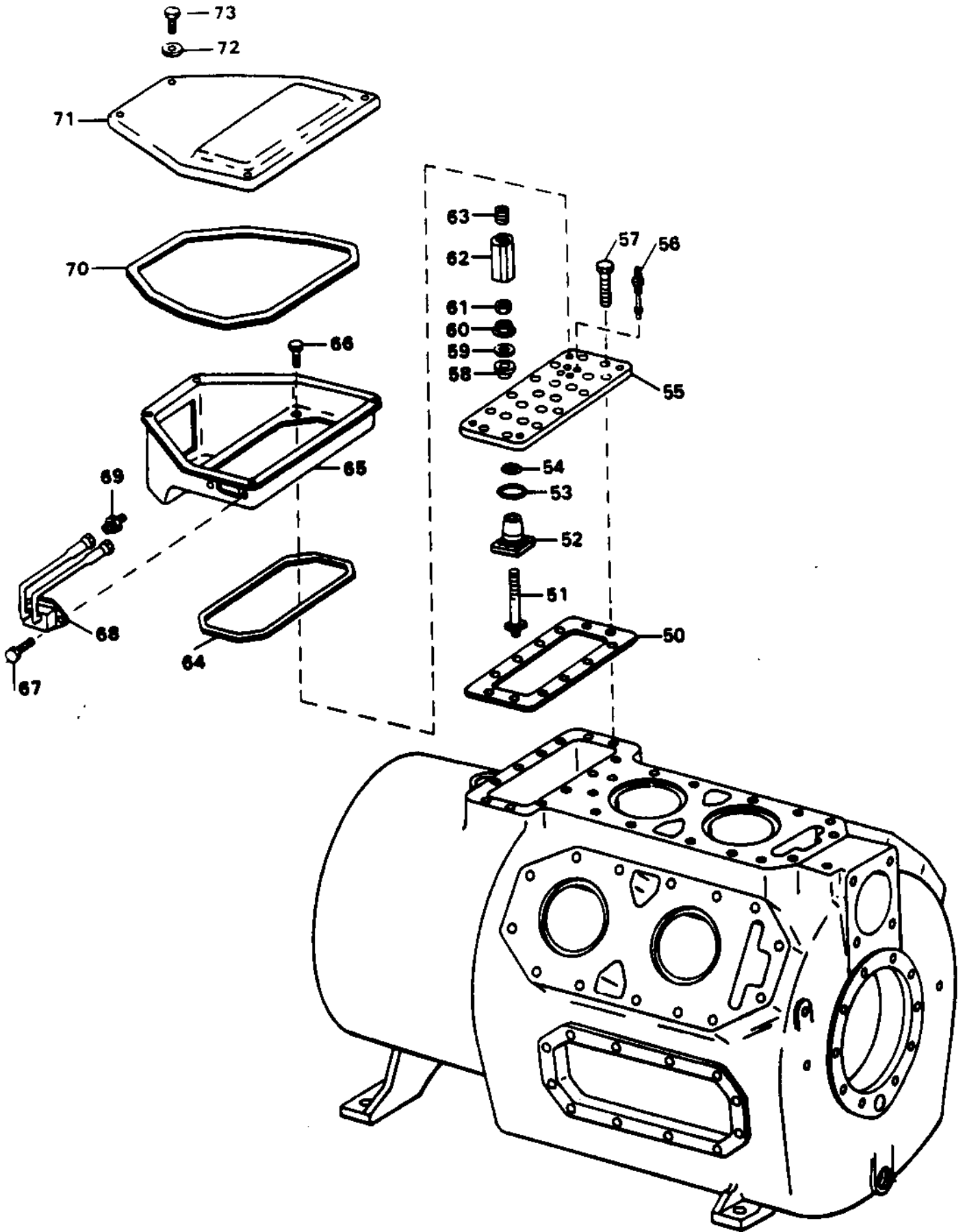
- + Recommended Spare Part
- * When replacing Valve Plates on 4 cylinder Design "B,C,D,E, & G" and on 6 cylinder Design "C,D,E, & G" machines and springs on the 4 cylinder Design "B" and 6 cylinder Design "C", both the Valve Plates and the Valve Plate Springs must be replaced with current Design Plates and Springs.
- ** May be intermixed on the compressor with the original retainer ring RTR-42.





REF. NO.	PART NAME AND DESCRIPTION	PART NO.	CRHR-260 CRHR-400, 401		CRHR-350, 351		CRHR-320 CRHR-500, 501		CRHR-380 CRHR-600, 601	
			NO. REQ.		NO. REQ.		NO. REQ.		NO. REQ.	
35	Cover-Handhole, Assembly-----	COV-541	1		1		1		1	
35A	Glass-Sight-----	GLS-30	1+		1+		1+		1+	
	Consisting of:									
35B	Screw-Cap, Hex Head, 1/4-20 x 3/4	SCR-30	3		3		3		3	
35C	"O" Ring-----	RNG-818	1+		1+		1+		1+	
35D	Cover-----	COV-542	1		1		1		1	
36	Screw-Cap, Hex Head, 1/2-13 x 1 1/4, Handhole Cover to Housing-----	SCR-347	24		24		24		24	
37	Gasket-Handhole Cover-----	GKT-952	2		2		2		2	
38	Strainer-Off-----	SRA-71	1+		1+					
38	Strainer-Off-----	SRA-72					1+		1+	
39	"O" Ring-Off Strainer-----	RNG-145	1		1		1		1	
40	Sleeve-Off Strainer-----	SLV-19	1		1		1		1	
41	Magnet-Handhole Cover-----	MAG-2	4		4		4		4	
43	Plug-Pipe, Hex Head, 1/8-----	PLU-20	4		4		4		4	
44	Cover-Handhole-----	COV-540	1		1		1		1	
45	Piston & Rod Assembly (Consisting of):-	PST-43	4+						6+	
45	Piston & Rod Assembly (Consisting of):-	PST-50			4+		6+			
45A	Rod-Connecting-----	ROD-149	1+						1+	
45A	Rod-Connecting-----	ROD-163			1+		1+			
45B	Ring-Retaining-----	RNG-87	2+		2+		2+		2+	
45C	Piston & Pin Assembly-----	PST-44	1+		1+		1+		1+	
45D	Ring-Compression (Bottom)-----	RNG-411	1+		1+		1+		1+	
45E	Ring-Compression (Top)-----	RNG-412	1+		1+		1+		1+	

+ Recommended Spare Part

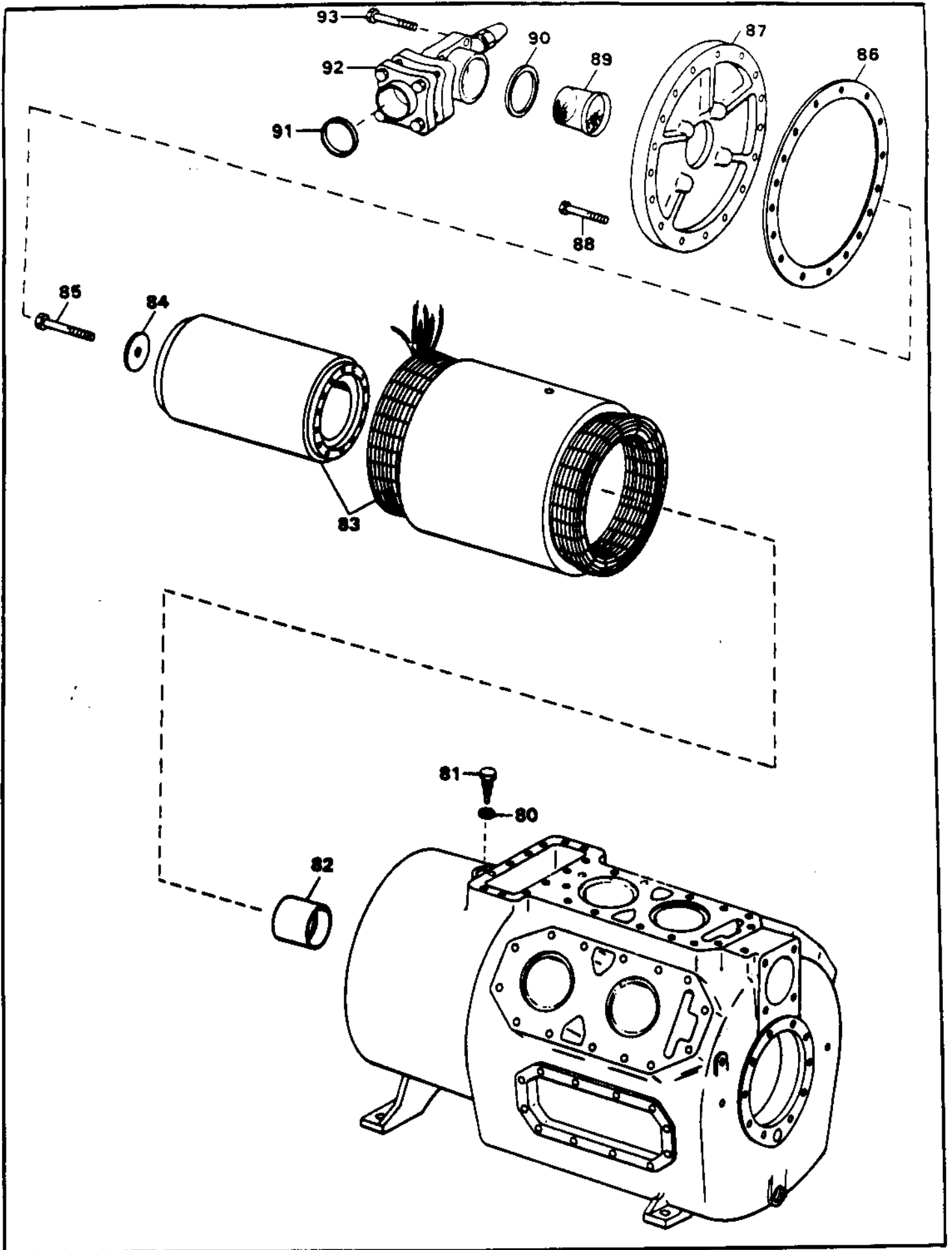


REF. NO.	PART NAME AND DESCRIPTION	PART NO.	CRHR-260	CRHR-320	CRHR-380
			NO. REQ.	NO. REQ.	NO. REQ.
50	Gasket-Terminal Plate-----	GKT-959	1+		
50	Gasket-Terminal Plate-----	GKT-955		1+	1+
51	Stud-Terminal (CRHR-260)(CRHR-261)-----	STU-66	6		
51	Stud-Terminal (CRHR-350, 400, 401)-----	STU-67	6		
51	Stud-Terminal-----	STU-68		6	6
52	Insulator-Internal-----	INS-197	6		
52	Insulator-Internal-----	INS-199		6	6
53	"O" Ring-----	RNG-37	6		
53	"O" Ring-----	RNG-891		6	6
54	"O" Ring-----	RNG-38	6		
54	"O" Ring-----	RNG-413		6	6
55	Plate-Terminal, 6 Lead-----	PLT-435	1		
55	Plate-Terminal, 6 Lead-----	PLT-440		1	1
56	Terminal-Hermetic-----	TER-8	4	4	4
57	Screw-Cap, Hex Head, 7/16-14 x 1 1/4, Terminal Plate & Junction Box Mounting-----	SCR-233	12	12	12
58	Insulator-External-----	INS-198	6		
58	Insulator-External-----	INS-200		6	6
59	Flatwasher, 1/4-----	WAS-315	12		
59	Flatwasher, 3/8-----	WAS-145		12	12
60	Nut-Hex, 1/4-20, Whiz Lock-----	NUT-9	6		
60	Nut-Hex, 3/8-16, Whiz Lock-----	NUT-79		6	6
61	Nut-Hex, 1/4-20-----	NUT-77	6		
61	Nut-Hex, 1/4-20-----	NUT-80		6	6
62	Connector-Terminal Stud-----	LUG-4		6	6
62	Connector-Terminal Stud-----	LUG-11	**		
*	Buss Bar-----	BAR-47		**	**
*	Buss Bar-----	BAR-74	**		
63	Screw, 1/2-13 x 1/2-----	SCR-211		6	6
64	Gasket-Junction Box-----	GKT-988	1+		
64	Gasket-Junction Box-----	GKT-989		1+	1+
65	Box-Junction-----	BOX-126	1		
65	Box-Junction-----	BOX-127		1	1
66	Screw-Cap, Hex Head, 5/16-18 x 5/8, Junction Box Mounting-----	SCR-162	4	4	4
67	Screw-Round Head, .164-32 x 5/8, Pressure Control Mounting-----	SCR-35	2	2	2
68	Control-Pressure, Oil Safety-----	CNT-553	1+	1+	1+
69	Adapter-Flare-----	ADP-12	2	2	2
70	Gasket-Junction Box Cover-----	GKT-986	1+		
70	Gasket-Junction Box Cover-----	GKT-987		1+	1+
71	Cover-Junction Box-----	COV-544	1		
71	Cover-Junction Box-----	COV-547		1	1
72	Lockwasher, 3/16, Junction Box Cover---	WAS-43	4	4	4
73	Screw-Self-Tapping, 3/16-32 x 1/2, Junction Box Cover-----	SCR-344	4	4	4
*	Nut-Hex, .164-32, Pressure Control Mounting-----	NUT-12	2	2	2

+ Recommended Spare Part

* Not Illustrated

**AS REQUIRED. With Part Wind Start use quantity 6 with no Buss Bar,
with Across the Line Start use quantity 3 with quantity 3 Buss Bars.

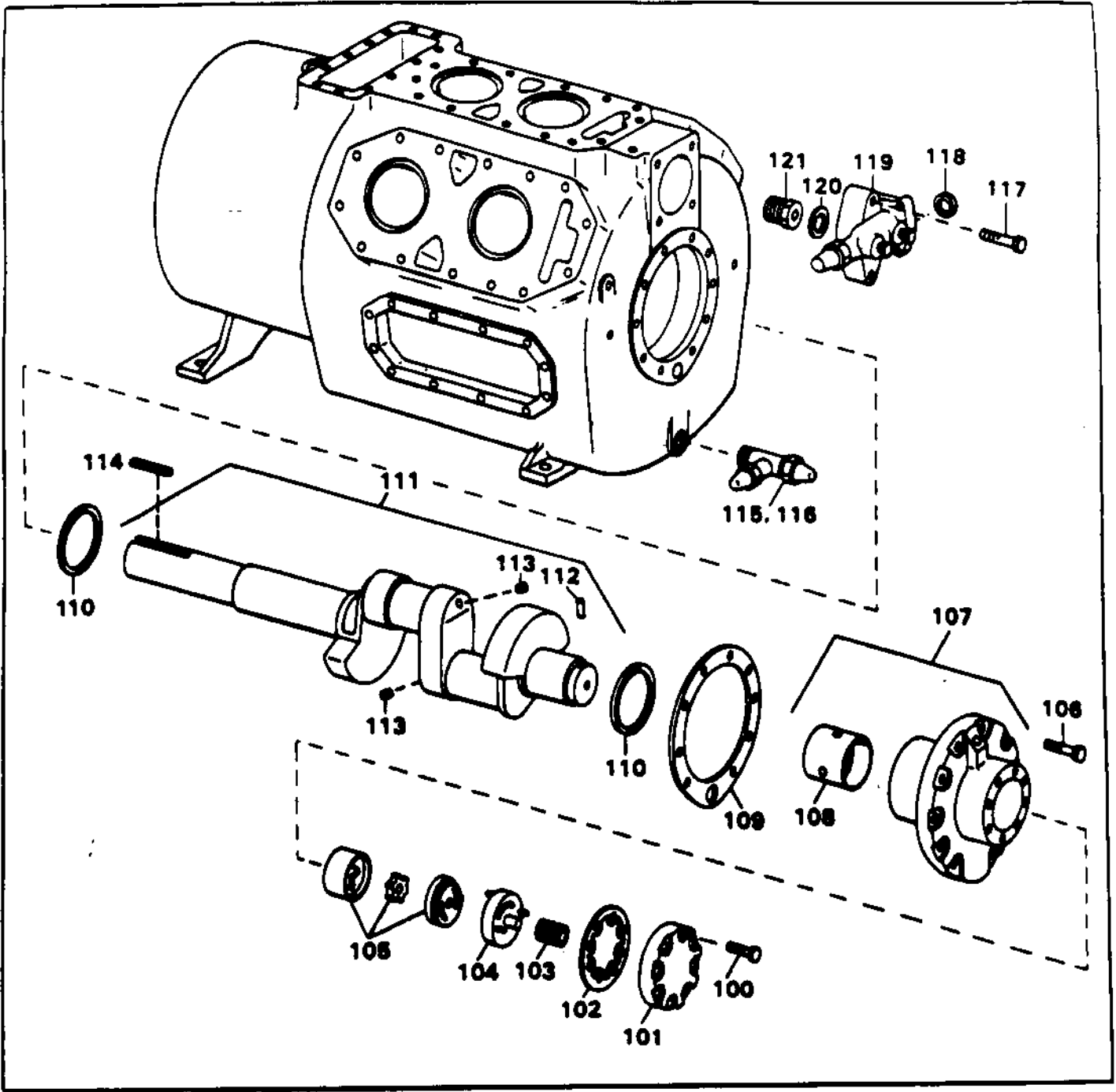


REF. NO.	PART NAME AND DESCRIPTION	PART NO.	CRHR-260	CRHR-320	CRHR-380
			CRHR-350, 351	CRHR-500, 501	CRHR-600, 601
			NO. REQ.	NO. REQ.	NO. REQ.
80	"0" Ring-Motor Mounting-----	RNG-133	1	1	1
81	Dowell-Motor Mounting-----	SCR-557	1	1	1
82	Bearing-Motor End, 2-7/8 Dia.-----	BRG-289	1+	2+	2+
82	Bearing-Motor End, 2-1/8 Dia.-----	BRG-262	1+		
83	Motor-Hermetic-----	+ +	1	1	1
84	Washer-Retaining, Rotor to Crankcase----	WAS-98	1		
84	Washer-Retaining, Rotor to Crankcase----	WAS-322		1	1
85	Screw-Cap, Socket Head, 5/8-18 x 3 1/2, Rotor to Crankshaft (R-22)-----	SCR-573	1		
85	Screw-Cap, Socket Head, 5/8-18 x 2 1/2, Rotor to Crankshaft (R-12)-----	SCR-585	1	1	1
86	Gasket-Suction Cover-----	GKT-912	1+		
86	Gasket-Suction Cover-----	GKT-953		1+	1+
87	Cover-Suction-----	COV-543	1		
87	Cover-Suction-----	COV-546		1	1
88	Screw-Cap, Hex Head, 7/16-14 x 3 1/5, Suction Cover to Housing-----	SCR-559	14		
88	Screw-Cap, Hex Head, 1/2-13 x 2 1/4, Suction Cover to Housing-----	SCR-346		16	16
*	Stud, 7/16-14 x 4 3/4, Suction Cover to Housing-----	STU-65	2		
*	Nut, 7/16-14-----	NUT-208	2		
89	Strainer-Suction Gas-----	SRA-64	1+		
89	Strainer-Suction Gas-----	SRA-73		1+	1+
90	Gasket-Suction Service Valve-----	GKT-15	1+		
90	Gasket-Suction Service Valve-----	GKT-44		1+	1+
91	Gasket-Adapter, Suction Service Valve---	GKT-14	1+		
91	Gasket-Adapter, Suction Service Valve---	GKT-44		1+	1+
92	Valve-Suction Service, 2 5/8 O.D.-----	VAL-35	1+		
92	Valve-Suction Service, 3 1/8 O.D.-----	VAL-43		1+	1+
93	Screw-Cap, Hex Head, 5/8-11 x 4, Suction Service Valve Mounting-----	SCR-317	4		
93	Screw-Cap, Hex Head, 5/8-11 x 5 1/2, Suction Service Valve Mounting-----	SCR-60		4	4

* Not Illustrated

+ Recommended Spare Part

++See Complete Motor Listing on Page 20.



REF. NO.	PART NAME AND DESCRIPTION	PART NO.	CRHR-260	CRHR-350	CRHR-320	CRHR-380
			CRHR-400, 401	CRHR-350, 351	CRHR-500, 501	CRHR-600, 601
			NO. REQ.	NO. REQ.	NO. REQ.	NO. REQ.
100	Screw-Cap, Hex Head, 5/16-18 x 1, Oil Pump to Bearing Head-----	SCR-33	8	8	8	8
101	Cover-Oil Pump-----	COV-545	1	1	1	1
102	Gasket-Cover, Oil Pump-----	GKT-956	1+	1+	1+	1+
103	Spring-Oil Pump-----	SPG-109	1+	1+	1+	1+
104	Plate-Oil Pump-----	PLT-397	1	1	1	1
105	Pump-Oil-----	PMP-460	1+	1+	1+	1+
106	Screw-Cap, Hex Head, 7/16-14 x 1 1/4, Bearing Head to Housing-----	SCR-233	10	10	10	10
107	Bearing Head with Insert-----	BRG-291	1+	1+	1+	1+
108	Bearing Insert-----	BRG-289	1+	1+	1+	1+
109	Gasket-Bearing Head-----	GKT-957	1+	1+	1+	1+
110	Bearing-Thrust-----	BRG-290 **	2+	2+	2+	2+
111	Crankshaft with Plugs-----	CSF-56	1+			
111	Crankshaft with Plugs-----	CSF-57			1+	
111	Crankshaft with Plugs-----	CSF-58				1+
111	Crankshaft with Plugs-----	CSF-101		1+		
	Consisting of:					
112	Pin-Roll-----	PIN-97	1	1	1	1
113	Plug-Pipe-----	PLU-96	2	2	2	2
114	Key-Crankshaft-----	KEY-295	1	1		
114	Key-Crankshaft-----	KEY-24			1	1
115	Valve-Oil Drain-----	VAL-31	1+	1+	1+	1+
116	Cap-Oil Drain Valve-----	HUT-16	1	1	1	1
117	Screw-Cap, Hex Head, 1/2-13 x 3 1/4, Discharge Service Valve Mounting-----	SCR-13	4	4		
117	Screw-Cap, Hex Head, 5/8-11 x 4, Discharge Service Valve Mounting-----	SCR-317			4	4
118	Gasket-Adapter, Discharge Service Valve-----	GKT-13	1+	1+		
118	Gasket-Adapter, Discharge Service Valve-----	GKT-830			1+	1+
119	Valve-Discharge Service 1 5/8 O.D.----	VAL-8	1+	1+		
119	Valve-Discharge Service 2 1/8 O.D.----	VAL-9			1+	1+
120	Gasket-Discharge Service Valve-----	GKT-14	1+	1+		
120	Gasket-Discharge Service Valve-----	GKT-15			1+	1+
121	Valve-Relief-----	VAL-240	1+	1+		
121	Valve-Relief-----	VAL-192			1+	1+
*	Kit-Gasket-----	KIT-523	1+	1+		
*	Kit-Gasket-----	KIT-524			1+	1+
*	Heater-Crankcase, 120 Volt, 100 Watt, (4 Cyl. Design "B,C,D,E,F", 6 Cyl. Design "C,D,E,F")-----	HTR-244	1+	1+	1+	1+
*	Heater-Crankcase, 120 Volt 140 Watt, (4 Cyl. Design "G,H", 6 Cyl, Design "G,H")-----	HTR-1566	1+	1+	1+	1+

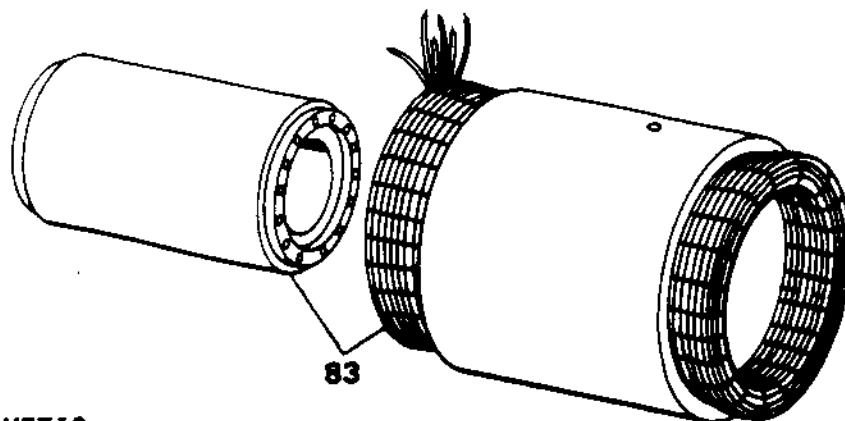
* Not Illustrated
+ Recommended Spare Part
**AS REQUIRED.

** Since November, 1976; the thrust bearings have been machined to include and "upset" on the outside diameter. The compressor housing machining was revised to accept the redesigned bearing. Replacement thrust bearings will include the "upset". See Service Bulletin HCOM-SB-35 when replacing these thrust bearings on compressors built prior to November, 1976.

KIT-523 INCLUDES:

KIT-524 INCLUDES:

PART NO.	QTY.	PART NO.	QTY.
GKT-948	4	GKT-948	6
GKT-1182	2	GKT-1182	2
GKT-951	2	GKT-951	3
GKT-949	1	GKT-949	2
GKT-950	1	GKT-952	2
GKT-952	2	GKT-955	1
GKT-959	1	GKT-989	1
GKT-988	1	GKT-987	1
GKT-986	1	GKT-953	1
GKT-912	1	GKT-44	2
GKT-15	2	GKT-956	1
GKT-956	1	GKT-957	1
GKT-957	1	GKT-830	1
GKT-13	1	GKT-15	1
GKT-14	2	RNG-818	1
RNG-818	1	RNG-145	1
RNG-145	1	RNG-414	9
RNG-37	9	RNG-413	9
RNG-38	9	RNG-133	1
RNG-133	1	RNG-410	6
RNG-410	4		



MOTOR-HERMETIC

REF. NO.	PART NAME AND DESCRIPTION	PART NO.	NO. REQ.
83	200/60/3, CRHR-260A, 261A -----	MOT-1369	1
83	230-460/60/3, CRHR-260B, 261B -----	*	
83	230/60/3, CRHR-260W, 261W -----	MOT-1370	1
83	200/50/3, CRHR-260Y, 261Y -----	MOT-1370	1
83	200/50/3-230/60/3, CRHR-260Q, 261Q-----	MOT-1370	1
83	460/60/3, CRHR-260C, 261C -----	MOT-1371	1
83	400/50/3, CRHR-260G, 261G -----	MOT-1371	1
83	400/50/3-460/60/3, CRHR-260K, 261K -----	MOT-1371	1
83	575/60/3, CRHR-260D, 261D -----	MOT-1372	1
83	230/50/3, CRHR-260F, 261F -----	MOT-1373	1
83	200/60/3, CRHR-320A, 321A -----	MOT-1384	1
83	230-460/60/3, CRHR-320B, 321B -----	*	
83	230/60/3, CRHR-320W, 321W -----	MOT-1385	1
83	200/50/3, CRHR-320Y, 321Y -----	MOT-1385	1
83	200/50/3-230/60/3, CRHR-320Q, 321Q-----	MOT-1385	1
83	460/60/3, CRHR-320C, 321C -----	MOT-1386	1
83	400/50/3, CRHR-320G, 321G -----	MOT-1386	1
83	400/50/3-460/60/3, CRHR-320K, 321K -----	MOT-1386	1
83	575/60/3, CRHR-320D, 321D -----	MOT-1387	1
83	230/50/3, CRHR-320F, 321F -----	MOT-1388	1
83	200/60/3, CRHR-380A, 381A -----	MOT-1389	1
83	230-460/60/3, CRHR-380B, 381B -----	*	
83	230/60/3, CRHR-380W, 381W -----	MOT-1390	1
83	200/50/3, CRHR-380Y, 381Y -----	MOT-1390	1
83	200/50/3-230/60/3, CRHR-380Q, 381Q-----	MOT-1390	1
83	460/60/3, CRHR-380C, 381C -----	MOT-1391	1
83	400/50/3, CRHR-380G, 381G -----	MOT-1391	1
83	400/50/3-460/60/3, CRHR-380K, 381K -----	MOT-1391	1
83	575/60/3, CRHR-380D, 381D -----	MOT-1392	1
83	230/50/3, CRHR-380F, 381F -----	MOT-1393	1
83	200/60/3, CRHR-350A, 351A, 400A, 401A -----	MOT-1364	1
83	230-460/60/3, CRHR-400B, 401B -----	*	
83	230/60/3, CRHR-350W, 351W, 400W, 401W -----	MOT-1365	1
83	200/50/3, CRHR-350Y, 351Y, 400Y, 401Y -----	MOT-1365	1
83	200/50/3-230/60/3, CRHR-350Q, 351Q, 400Q, 401Q-----	MOT-1365	1
83	460/60/3, CRHR-350C, 351C, 400C, 401C -----	MOT-1366	1
83	400/50/3, CRHR-350G, 351G, 400G, 401G -----	MOT-1366	1
83	400/50/3-460/60/3, CRHR-350K, 351K, 400K, 401K-----	MOT-1366	1
83	575/60/3, CRHR-350D, 351D, 400D, 401D -----	MOT-1367	1
83	230/50/3, CRHR-350F, 351F, 400F, 401F -----	MOT-1368	1
83	200/60/3, CRHR-500A, 501A -----	MOT-1374	1
83	230-460/60/3, CRHR-500B, 501B -----	*	
83	230/60/3, CRHR-500W, 501W -----	MOT-1375	1

MOTOR-HERMETIC

REF. NO.	PART NAME AND DESCRIPTION	PART NO.	NO. REQ.
83	200/50/3, CRHR-500Y, 501Y -----	MOT-1375	1
83	200/50/3-230/60/3, CRHR-500Q, 501Q-----	MOT-1375	1
83	460/60/3, CRHR-500C, 501C -----	MOT-1376	1
83	400/50/3, CRHR-500G, 501G -----	MOT-1376	1
83	400/50/3-460/60/3, CRHR-500K, 501K-----	MOT-1376	1
83	575/60/3, CRHR-500D, 501D -----	MOT-1377	1
83	230/50/3, CRHR-500F, 501F -----	MOT-1378	1
83	200/60/3, CRHR-600A, 601A -----	MOT-1379	1
83	230-460/60/3, CRHR-600B, 601B -----	*	
83	230/60/3, CRHR-600W, 601W -----	MOT-1380	1
83	200/50/3, CRHR-600Y, 601Y -----	MOT-1380	1
83	200/50/3-230/60/3, CRHR-600Q, 601Q-----	MOT-1380	1
83	460/60/3, CRHR-600C, 601C -----	MOT-1381	1
83	400/50/3, CRHR-600G, 601G -----	MOT-1381	1
83	400/50/3-460/60/3, CRHR-600K, 601K-----	MOT-1381	1
83	575/60/3, CRHR-600D, 601D -----	MOT-1382	1
83	230/50/3, CRHR-600F, 601F -----	MOT-1383	1

* Nine lead, dual voltage (230-460/60/3) motors are no longer available. Determine operating voltage and select correct single voltage, six lead motor replacement from the above chart.

PARTS INDEX

THIS IS A LISTING OF THE PART NUMBERS CONTAINED IN THE PARTS LIST AND IS IN ALPHA-NUMERIC ORDER TO MAKE PARTS IDENTIFICATION EASIER. THIS INDEX PROVIDES PART NUMBER, DESCRIPTION OF THE PART, SECTION OF THE PARTS LIST THE PART IS LOCATED IN, QUANTITY AND WHETHER THE PART IS RECOMMENDED FOR LOCAL STOCK.

PART NO.	DESCRIPTION	PAGE	NO. REQ	RLS
ADP0012	ADAPTER-FLARE	16	2	
BAR0047	BUSS BAR	16	AR	
BAR0074	BUSS BAR	16	AR	
BLT0063	BOLT-VALVE CAGE	12	1	
BOX0126	BOX-JUNCTION	16	1	
BOX0127	BOX-JUNCTION	16	1	
BRG0262	BEARING-MOTOR END, 2-1/8 DIA.	18	1	+
BRG0289	BEARING INSERT	20	1	+
	BEARING-MOTOR END, 2-7/8 DIA.	18	AR	+
BRG0290	BEARING THRUST	20	2	+
BRG0291	BEARING HEAD WITH INSERT	20	1	+
BUS0105	BUSHING-CHECK VALVE	10	1	
BUS0106	BUSHING-UNLOADER VALVE	10	1	
CAG0029	CAGE	12	1	
CSF0056	CRANKSHAFT WITH PLUGS	20	1	+
CSF0057	CRANKSHAFT WITH PLUGS	20	1	+
CSF0058	CRANKSHAFT WITH PLUGS	20	1	+
CSF0101	CRANKSHAFT WITH PLUGS	20	1	+
CNT0553	CONTROL-PRESSURE, OIL SAFETY	16	1	+
COL1301	COIL-HOLDING, ASCO, 115V, 60 HZ	11	1	+
COL1304	COIL-HOLDING, ASCO, 230V, 50 HZ	11	1	+
COL1638	COIL-HOLDING, ALCO, 115V, 50-60 HZ	11	1	+
COL1639	COIL-HOLDING, ALCO, 200-230V, 50-60 HZ	11	1	+
COV0540	COVER-HANDHOLE	14	1	
COV0541	COVER-HANDHOLE ASSEMBLY	14	1	
COV0542	COVER	14	1	
COV0543	COVER-SUCTION	18	1	
COV0544	COVER-JUNCTION BOX	16	1	
COV0545	COVER-OIL PUMP	20	1	
COV0546	COVER-SUCTION	18	1	
COV0547	COVER-JUNCTION BOX	16	1	
COV0632	COVER-CHECK VALVE	10	1	
GKT0013	GASKET	21	1	
	GASKET-ADAPTER, DISCHARGE SERVICE VALVE	20	1	+
GKT0014	GASKET	21	2	
	GASKET-DISCHARGE SERVICE VALVE	20	1	+
	GASKET-SUCTION SERVICE VALVE	18	1	+
GKT0015	GASKET	21	AR	
	GASKET-DISCHARGE SERVICE VALVE	20	1	+
	GASKET-SUCTION SERVICE VALVE	18	1	+
GKT0044	GASKET	21	1	
	GASKET-SUCTION SERVICE VALVE	18	2	+
GKT0830	GASKET	21	1	
	GASKET-ADAPTER, DISCHARGE SERVICE VALVE	20	1	+
GKT0912	GASKET	21	1	
	GASKET-SUCTION COVER	18	1	+
GKT0948	GASKET-CHECK VALVE	10/21	AR	+

PART NO.	DESCRIPTION	PAGE	NO. REQ	RLS
GKT0949	GASKET	21	AR	
	GASKET-CYLINDER HEAD (USE W/HDO130,133 & 138)	8/10	AR	
GKT0950	GASKET	21	1	
	GASKET-CYLINDER HEAD (USE W/HDO134,137 & 139)	8/10	AR	
GKT0951	GASKET	21	AR	
	GASKET-CYLINDER HEAD (USE W/HDO040)	8/10	AR	
GKT0952	GASKET	21	AR	
	GASKET-HANDHOLE COVER	14	2	
GKT0953	GASKET-SUCTION COVER	18	1	+
	GASKET	21	1	
GKT0955	GASKET	21	AR	
	GASKET-TERMINAL PLATE	16	1	+
GKT0956	GASKET	21	AR	
	GASKET-COVER, OIL PUMP	20	1	+
GKT0957	GASKET	21	AR	
	GASKET-BEARING HEAD	20	1	+
GKT0959	GASKET	21	1	
	GASKET-TERMINAL PLATE	16	1	+
GKT0986	GASKET	21	1	
	GASKET-JUNCTION BOX COVER	16	1	+
GKT0987	GASKET	21	1	
	GASKET-JUNCTION BOX COVER	16	1	+
GKT0988	GASKET	21	1	
	GASKET-JUNCTION BOX	16	1	+
GKT0989	GASKET	21	1	
	GASKET-JUNCTION BOX	16	1	+
GKT1182	GASKET	21	2	
	GASKET-MOUNTING PLATE, SOLENOID VALVE	11	1	
GLS0030	GLASS-SIGHT	14	1	+
HDO130	HEAD, CYLINDER	6/8/10	AR	
HDO133	HEAD, CYLINDER	7/8/10	AR	
HDO134	HEAD, CYLINDER	6/8/10	AR	
HDO137	HEAD, CYLINDER	7/8/10	AR	
HDO138	HEAD, CYLINDER	8/10	AR	
HDO139	HEAD, CYLINDER	8/10	AR	
HDO140	HEAD, CYLINDER	6-8/10	AR	
HTR0244	HEATER-CRANKCASE, 120V, 100W, 4 & 6 CYLINDER	20	1	+
HTR1566	HEATER-CRANKCASE, 120V, 140W, 4 & 6 CYLINDER	20	1	+
INS0197	INSULATOR-INTERNAL	16	6	
INS0198	INSULATOR-EXTERNAL	16	6	
INS0199	INSULATOR-INTERNAL	16	6	
INS0200	INSULATOR-EXTERNAL	16	6	
KEY0024	KEY-CRANKSHAFT	20	1	
KEY0295	KEY-CRANKSHAFT	20	1	
KIT0523	KIT-GASKET	20	1	+
KIT0524	KIT-GASKET	20	1	+
KIT0686	KIT-CHECK VALVE ASSEMBLY	11	1	
LNR0038	CYLINDER LINER ASSEMBLY	12	AR	+
LNR0039	LINER	12	1	+
LNR0042	CYLINDER LINER ASSEMBLY (LOW LIFT)	12	AR	
LUG0004	CONNECTOR-TERMINAL STUD	16	6	
LUG0011	CONNECTOR-TERMINAL STUD	16	AR	
MAG0002	MAGNET-HANDHOLE COVER	14	4	
MOT1364	MOTOR-HERMETIC, 200/60/3, 350A, 351A, 400A, 401A	22	1	

PART NO.	DESCRIPTION	PAGE	NO. REC	RLS
MOT1365	MOTOR-HERMETIC, 200/50/3, 350Y, 351Y, 400Y, 401Y	22	1	
	MOTOR-HERMETIC, 230/60/3, 350W, 351W, 400W, 401W	22	1	
	MOTOR-HERMETIC, 200/50/3-230/60/3, 350Q, 351Q, 400Q, 401Q	22	1	
MOT1366	MOTOR-HERMETIC, 400/50/3, 350G, 351G, 400G, 401G	22	1	
	MOTOR-HERMETIC, 460/60/3, 350C, 351C, 400C, 401C	22	1	
	MOTOR-HERMETIC, 400/50/3-460/60/3, 350K, 351K, 400K, 401K	22	1	
MOT1367	MOTOR-HERMETIC, 575/60/3, 350D, 351D, 400D, 401D	22	1	
MOT1368	MOTOR-HERMETIC, 230/50/3, 350F, 351F, 400F, 401F	22	1	
MOT1369	MOTOR-HERMETIC, 200/60/3, 260A, 261A	22	1	
MOT1370	MOTOR-HERMETIC, 200/50/3, 260Y, 261Y	22	1	
	MOTOR-HERMETIC, 230/60/3, 260W, 261W	22	1	
	MOTOR-HERMETIC, 200/50/3-230/60/3, 260Q, 261Q	22	1	
MOT1371	MOTOR-HERMETIC, 400/50/3, 260G, 261G	22	1	
	MOTOR-HERMETIC, 460/60/3, 260C, 261C	22	1	
	MOTOR-HERMETIC, 400/50/3-460/60/3, 260K, 261K	22	1	
MOT1372	MOTOR-HERMETIC, 575/60/3, 260D, 261D	22	1	
MOT1373	MOTOR-HERMETIC, 230/50/3, 260F, 261F	22	1	
MOT1374	MOTOR-HERMETIC, 200/60/3, 500A, 501A	22	1	
MOT1375	MOTOR-HERMETIC, 200/50/3, 500Y, 501Y	22	1	
	MOTOR-HERMETIC, 230/60/3, 500W, 501W	22	1	
	MOTOR-HERMETIC, 200/50/3-230/60/3, 500Q, 501Q	22	1	
MOT1376	MOTOR-HERMETIC, 400/50/3, 500G, 501G	22	1	
	MOTOR-HERMETIC, 460/60/3, 500C, 501C	22	1	
	MOTOR-HERMETIC, 400/50/3-460/60/3, 500K, 501K	22	1	
MOT1377	MOTOR-HERMETIC, 575/60/3, 500D, 501D	22	1	
MOT1378	MOTOR-HERMETIC, 230/50/3, 500F, 501F	22	1	
MOT1379	MOTOR-HERMETIC, 200/60/3, 600A, 601A	22	1	
MOT1380	MOTOR-HERMETIC, 200/50/3, 600Y, 601Y	22	1	
	MOTOR-HERMETIC, 230/60/3, 600W, 601W	22	1	
	MOTOR-HERMETIC, 200/50/3-230/60/3, 600Q, 601Q	22	1	
MOT1381	MOTOR-HERMETIC, 400/50/3, 600G, 601G	22	1	
	MOTOR-HERMETIC, 460/60/3, 600C, 601C	22	1	
MOT1381	MOTOR-HERMETIC, 400/50/3-460/60/3, 600K, 601K	22	1	
MOT1382	MOTOR-HERMETIC, 575/60/3, 600D, 601D	22	1	
MOT1383	MOTOR-HERMETIC, 230/50/3, 600F, 601F	22	1	
MOT1384	MOTOR-HERMETIC, 200/60/3, 320A, 321A	22	1	
MOT1385	MOTOR-HERMETIC, 200/50/3, 320Y, 321Y	22	1	
	MOTOR-HERMETIC, 230/60/3, 320W, 321W	22	1	
	MOTOR-HERMETIC, 200/50/3-230/60/3, 320Q, 321Q	22	1	
MOT1386	MOTOR-HERMETIC, 400/50/3, 320G, 321G	22	1	
	MOTOR-HERMETIC, 460/60/3, 320C, 321C	22	1	
	MOTOR-HERMETIC, 400/50/3-460/60/3, 320K, 321K	22	1	
MOT1387	MOTOR-HERMETIC, 575/60/3, 320D, 321D	22	1	
MOT1388	MOTOR-HERMETIC, 230/50/3, 320F, 321F	22	1	
MOT1389	MOTOR-HERMETIC, 200/60/3, 380A, 381A	22	1	
MOT1390	MOTOR-HERMETIC, 200/50/3, 380Y, 381Y	22	1	
	MOTOR-HERMETIC, 230/60/3, 380W, 381W	22	1	
	MOTOR-HERMETIC, 200/50/3-230/60/3, 380Q, 381Q	22	1	
MOT1391	MOTOR-HERMETIC, 400/50/3, 380G, 381G	22	1	
	MOTOR-HERMETIC, 460/60/3, 380C, 381C	22	1	
	MOTOR-HERMETIC, 400/50/3-460/60/3, 380K, 381K	22	1	
MOT1392	MOTOR-HERMETIC, 575/60/3, 380D, 381D	22	1	
MOT1393	MOTOR-HERMETIC, 230/50/3, 380F, 381F	22	1	

PART NO.	DESCRIPTION	PAGE	NO. REQ	RLS
NUT0009	NUT-HEX, 1/4-20, WHIZ LOCK	16	6	
NUT0012	NUT-HEX, .164-32, PRESSURE CONTROL MOUNTING	16	2	
NUT0016	CAP-OIL DRAIN VALVE	20	1	
NUT0071	LOCKNUT-VALVE CAGE BOLT	12	1	
NUT0077	NUT-HEX, 1/4-20	16	6	
NUT0079	NUT-HEX, 3/8-16, WHIZ LOCK	16	6	
NUT0080	NUT-HEX, 1/4-20	16	6	
NUT0208	NUT, 7/16-14	18	2	
NUT0234	NUT, 7/16-20	10	1	
NUT0235	NUT-UNLOADER VALVE, 3/8-24	10	1	
PIN0097	PIN-ROLL	20	1	
PLT0397	PLATE-OIL PUMP	20	1	
PLT0435	PLATE-TERMINAL, 6 LEAD	16	1	
PLT0440	PLATE-TERMINAL, 6 LEAD	16	1	
PLT0557	PLATE-MOUNTING, SOLENOID VALVE	11	1	
PLT0570	PLATE-VALVE	12	1	+
PLT0684	PLATE-VALVE (LOW LIFT)	12	1	
PLU0020	PLUG-PIPE, HEX HEAD, 1/8	14	4	
PLU0096	PLUG-PIPE	20	2	
PMPO460	PUMP-OIL	20	1	+
PST0042	PISTON	11	1	
PST0043	PISTON & ROD ASSEMBLY	14	AR	+
PST0044	PISTON & PIN ASSEMBLY	14	1	+
PST0049	PISTON-UNLOADER ASSEMBLY	11	1	+
PST0050	PISTON & ROD ASSEMBLY	14	AR	+
RNG0037	O-RING	16/21	AR	
RNG0038	O-RING	16/21	AR	
RNG0037	RING RETAINING	14	2	+
RNG0038	O-RING	21	AR	
RNG0045	O-RING MOTOR MOUNTING	18	1	
RNG0045	O-RING-OIL STRAINER	14	1	
RNG0045	O-RING	21	AR	
RNG0410	O-RING	12/21	AR	+
RNG0411	RING-COMPRESSION (BOTTOM)	14	1	+
RNG0412	RING-COMPRESSION (TOP)	14	1	+
RNG0413	O-RING	16/21	AR	
RNG0414	O-RING	21	AR	
RNG0448	O-RING	11	1	
RNG0818	O-RING	14/21	AR	+
RNG0891	O-RING	16	6	
ROD0149	ROD-CONNECTING	14	1	+
ROD0163	ROD-CONNECTING	14	1	+
RTR0049	RETAINER	10	1	
RTR0094	RETAINER	12	2	
SCR0013	SCREW-CAP, HEX HEAD, 1/2-13X3 1/4	10/20	AR	
SCR0033	SCREW-CAP, HEX HEAD, 5/16-18X1, OIL PUMP TO BEARING HEAD	20	8	
SCR0035	SCREW-ROUND HEAD, .164-32X5/8, PRESSURE CTRL. MOUNT	16	2	
SCR0038	SCREW-CAP, HEX HEAD, 1/4-20X5/8, SIGHT GLASS MOUNT	14	3	
SCR0060	SCREW-CAP, HEX HEAD, 5/8-11X5 1/2, SUCTION SERVICE VALVE MOUNTING	18	4	
SCR0138	SCREW-CAP, HEX HEAD, 3/8-16X1 1/4	10	8	
SCR0162	SCREW-CAP, HEX HEAD, 5/16-18X5/8, JUNCTION BOX MOUNT	16	4	
SCR0211	SCREW, 1/2-13X1/2	16	6	
SCR0233	SCREW-CAP, HEX HEAD, 7/16-14X1 1/4, BEARING HEAD TO HOUSING	20	10	

PART NO.	DESCRIPTION	PAGE	NO. REQ	RLS
SCRO233	SCREW-CAP, HEX HEAD, 7/16-14X1 1/4, TERMINAL PLATE AND JUNCTION BOX MOUNT	16	12	
SCRO317	SCREW-CAP, HEX HEAD, 5/8-11X4	18/20	8	
SCRO344	SCREW, SELF-TAPPING, 3/16-32X1/2, JUNCTION BOX COVER	16	4	
SCRO346	SCREW-CAP, HEX HEAD, 1/2-13X2 1/4, SUCTION COVER TO HOUSING	18	16	
SCRO347	SCREW-CAP, HEX HEAD, 1/2-13X1 1/4, HANDHOLE COVER TO HOUSING	14	24	
SCRO557	DOWELL-MOTOR MOUNTING	18	1	
SCRO559	SCREW-CAP, HEX HEAD, 1/2-13X2 1/4, SUCTION COVER TO HOUSING	18	14	
SCRO562	SCREW-SOCKET, HEX HEAD, 3/16-32 X 5/8	11	2	
SCRO573	SCREW-CAP, SOCKET HEAD, 5/8-18X3 1/2, ROTOR TO CRANKSHAFT	18	1	
SCRO585	SCREW-CAP, SOCKET HEAD, 5/8-18X2 1/2, ROTOR TO CRANKSHAFT	18	1	
SELO194	SEAL	10	1	
SETO022	SEAT	12	1	
SLV0019	SLEEVE-OIL STRAINER	14	1	
SPG0056	SPRING	12	6	+
SPG0095	SPRING-CYLINDER	12	AR	
SPG0109	SPRING-OIL PUMP	20	1	+
SPG0116	SPRING, 4 CYLINDER & 6 CYLINDER	12	AR	+
SPG0134	SPRING-CHECK VALVE	10	1	+
SPG0154	SPRING	12	AR	+
SRA0064	STRAINER-SUCTION GAS	18	1	+
SRA0071	STRAINER-OIL	14	1	+
SRA0072	STRAINER-OIL	14	1	+
SRA0073	STRAINER-SUCTION GAS	18	1	+
STU0065	STUD, 7/16-14X4 3/4, SUCTION COVER TO HOUSING	18	2	
STU0066	STUD-TERMINAL	16	6	
STU0067	STUD-TERMINAL	16	6	
STU0068	STUD-TERMINAL	16	6	
TER0008	TERMINAL-HERMETIC	16	4	
VAL0008	VALVE-DISCHARGE SERVICE, 1 5/8 OD	20	1	+
VAL0009	VALVE-DISCHARGE SERVICE, 2 1/8 OD	20	1	+
VAL0031	VALVE-OIL DRAIN	20	1	+
VAL0035	VALVE-SUCTION SERVICE, 2 5/8 OD	18	1	+
VAL0043	VALVE-SUCTION SERVICE, 3 1/8 OD	18	1	+
VAL0192	VALVE-RELIEF	20	1	+
VAL0240	VALVE-RELIEF	20	1	+
VAL1118	VALVE-UNLOADER ASSEMBLY	10	1	+
VAL1120	VALVE-UNLOADER	10	1	
VAL1121	DISCHARGE VALVE ASSEMBLY	12	AR	+
VAL1122	VALVE	12	1	+
VAL1123	VALVE-SUCTION	12	1	+
VAL1661	VALVE-SOLENOID, 115V, 60 HZ	11	1	+
VAL1662	VALVE-SOLENOID, 230V, 50 HZ	11	1	+
VAL1675	VALVE-CHECK	10	1	+
WAS0043	LOCKWASHER, 3/16, JUNCTION BOX COVER	16	4	
WAS0098	WASHER-RETAINING, ROTOR TO CRANKCASE	18	1	
WAS0099	WASHER-UNLOADER VALVE, 3/8	10	1	
WAS0145	FLATWASHER, 3/8	16	12	
WAS0315	FLATWASHER, 1/4	16	12	
WAS0322	WASHER-RETAINING, ROTOR TO CRANKCASE	18	1	