

BULLETIN



CARLYLE COMPRESSOR DIVISION

Visit our web site at www.carlylecompressor.com
Phone: 1-800-GO-CARLYLE Fax: 1-800-532-5038

Carlyle Compressor Company
Carrier Parkway, TR-4
P.O. Box 4808
Syracuse, NY 13221

☒ **PRODUCT**

☐ **GENERAL**

☐ **SERVICE & PARTS**

Date: 25 February, 2003

Number: 03T-3

Issued By: P. Tollar

Subject: *CARLYLE "CE MARK" APPROVAL ON 06D, 06E, 06CC & 06T COMPRESSORS*

Product Name 06D, 06E, 06CC & 06T

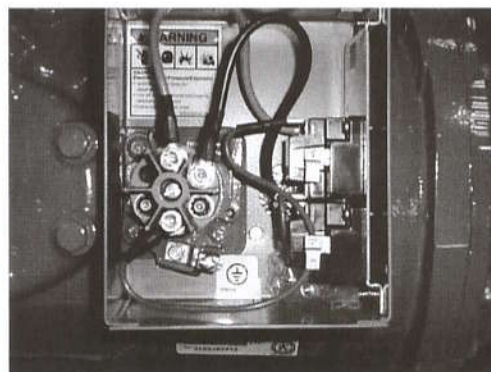
Product Family

DESCRIPTION

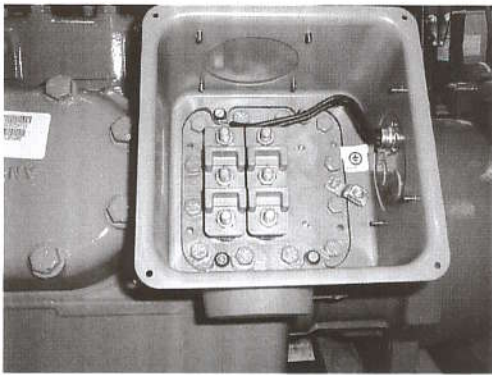
Carlyle is announcing that its 06D, 06E, 06CC & 06T compressors comply with the CE Mark requirements and will have the CE Mark logo added to the appropriate compressor nameplates. With the implementation of the CE Mark, a ground lug has been added to the terminal plate. For the location of the lug with the various compressor configurations – see the figures below. The CE Mark and ground lug will become effective in February of 2003 on all the compressors.



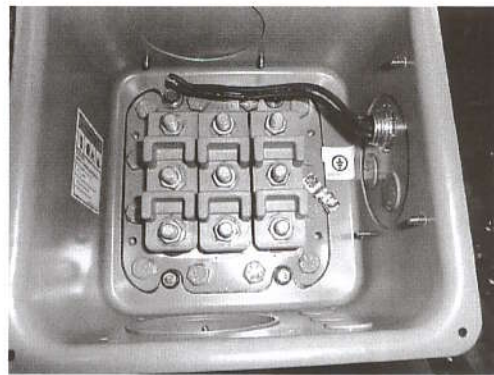
06D with Drawn Steel Box



06D with Folded Box



**06E, 06CC & 06T – with 6-Terminals
(For 06T – motor thermistor not shown)**



06E, 06CC – with 9-Terminals

The terminal box grounding lug (Carlyle P/N HY90HR001) is a compression fitting with the capability of connecting a wire size in the #14 to #6 range. If the grounding lug is loosened to re-orientate the direction, it should be tightened to a torque of 18 to 28 in-lbs.

Effective May 29, 2002, all pressure equipment marketed and installed into service within the European Union must comply with the requirements imposed by the European Pressure Directive (PED) 97/23/EC. There are certain exclusions from compliance with this directive. The mechanical design of Carlyle semi-hermetic compressors provides for exclusion from the scope of the PED based on criteria indicated in Article 1, Paragraph 3.10 of the directive. This covers our 06D, 06E & 06T compressor models.