

**FILE INFORMATION:**

DIVISION TAB-TRANE REFRIGERATION PRODUCTS
PRODUCT TAB-RECIPROCATING COMPRESSOR-
CONDENSER UNITS

MODEL TAB-Hermetic E-F
LITERATURE ITEM-GENERAL SERVICE BULLETIN

LITERATURE FILE NO.**HCOM-SB-63****GENERAL
SERVICE BULLETIN**

Since the Trane Company has a policy of continuous product improvement, it reserves the right to change specifications and design without notice. The installation and servicing of the equipment referred to in this booklet should be done by qualified, experienced technicians.

7/16/82

SUBJECT: MODEL "E" AND "F" COMPRESSOR CONNECTING ROD REDESIGN**INTRODUCTION:**

The purpose of this Service Bulletin is to advise that connecting rods on Model E and F compressors have been redesigned.

DISCUSSION:

The design change was made to improve the connecting rod large end bore dimensional stability. The improved bore stability makes the rod less sensitive to improper torquing of the rod cap bolts. The rod bolt torques for the new style rods are as follows:

MODEL E - 24 ft lbs.
MODEL F - 12 ft lbs.

The new rods are completely interchangeable with the old rods and may be mix-matched in the same compressor. Any stock of old style rods should be used. Figure 1 shows the new style rod on the left with the old style rod on the right.

NEW PRODUCTION:

The compressor serial number design designator, 6th digit, changes with the new rod change. The design designator for all Model E open and hermetic changes to A.

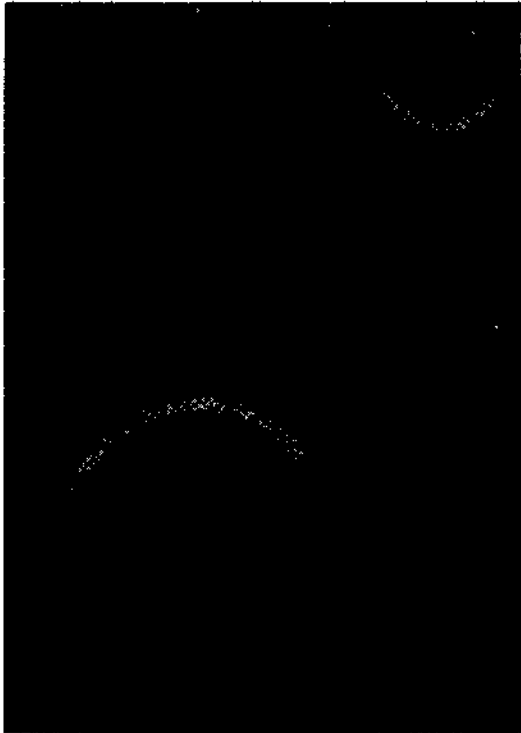
The Model F serial number design designator changes as follows:

<u>HERMETIC</u>	<u>OPEN</u>
3 cyl - C	D
4 cyl - D	C
5 cyl - D	C
6 cyl - C	C
8 cyl - D	C

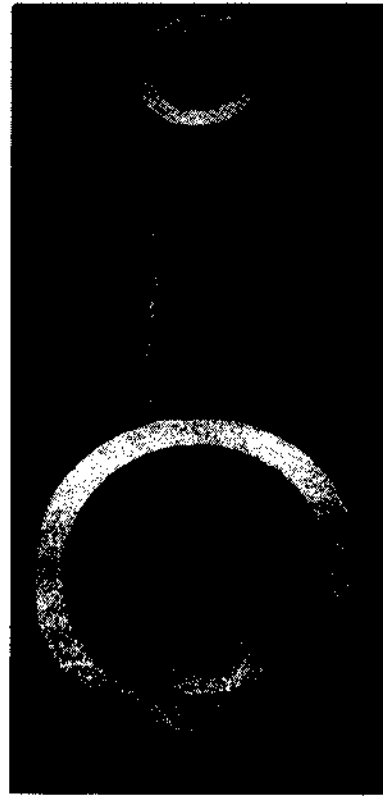
The model designator does not change.

PARTS ORDERING INFORMATION:

All part numbers remain unchanged.



NEW



OLD

FIGURE 1 - New and Old Style Connecting Rods